

Through core type precision current transformer



Model:TA12L-100

Characteristics:

Epoxy resin encapsulated, Nanocrystalline core, mini outline size, fully enclosed. Electrical load remote monitoring, as the input signal of electric control system, lack of phase indicating, electrical energy measuring, motor monitoring.

Technical index:

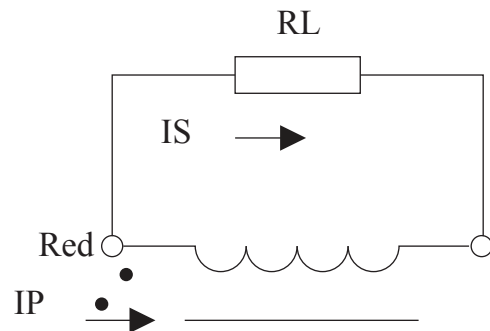
Mounting type: Suspended mounting
 Material of the core: Nanocrystalline
 Flame resistance: UL94-V0
 Execution standard: GB1208-2006
 Operating temperature: -20°C ~ +75°C
 Storage temperature: -30°C ~ +80°C
 Frequency range: 20Hz-20KHz
 Dielectric strength: ≥3.5KV 50Hz 1min



Electrical parameters:

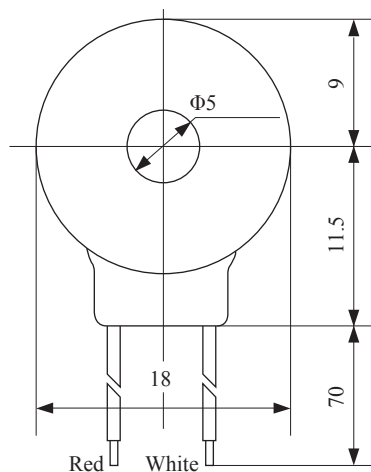
Rated input	0-5	A
Max.input	5	A
Rated output	0-5	mA
Turns ratio	1: 1000	
Accuracy	±1	%
Linearity	≤0.3	%
Phase difference	≤10'	
max: Max. sampling resistance	200	Ω
Weight	7.3	g

Schematic diagram:

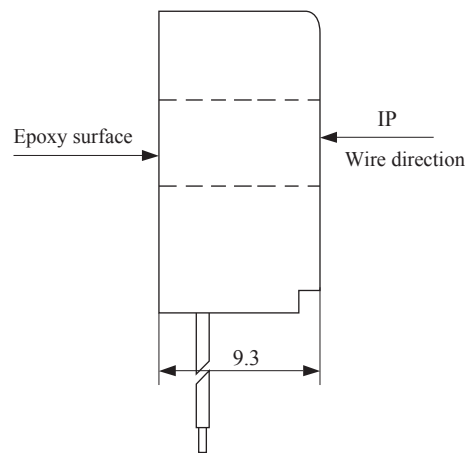


0.35mm² red and white high-temperature wire, lead 17cm

Dimensions (in mm) :



Front view



Side view