

Φ 25mm Aperture Split core current transformer



Front view



Opening view

Characteristic

- Opening and closing structure
- easy for installation
- Lead output
- Plate mounting

Product application

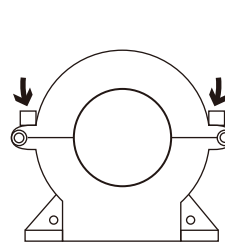
- Portable instrument
- Household metering
- Monitor motor load

Product advantage

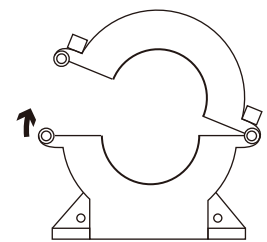
- Economic and practical
- Improve efficiency
- High cost performance

Installation diagram

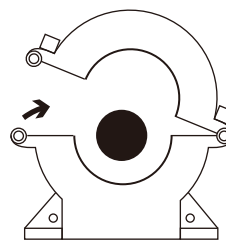
Primary threading method



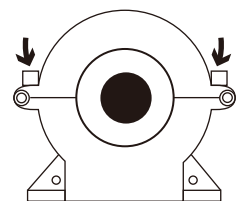
1. Unscrew the screw



2. Open up



3. In the lead



4. Buckle and screw

Typical technical index:

- Material of core——Silicon steel sheet
- Working voltage——Phase voltage $\leq 660V$
- Working temperature—— $-20^{\circ}C \sim +60^{\circ}C$
- Storage temperature—— $-25^{\circ}C \sim +65^{\circ}C$
- Frequency range—— $50Hz \sim 60Hz$
- Dielectric strength——output (outputbare conductor) AC 3.5KV/1min 5mA 50Hz
- Weight——204g

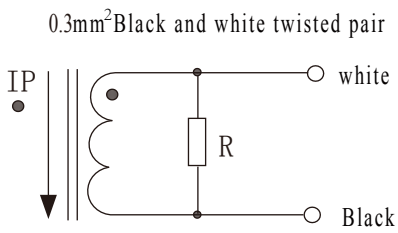
Electrical parameters: (The following parameters are typical values and actual values will be subject to product testing)

Can be made according to user requirements parameters

	Input current A	Output current A	Rated output power VA			number of turns
			0.5grade	1grade	3grade	
1A Output	50A	1A	-	1	2	1
	100A	1A	1	1.5	2.5	1
	200A	1A	1.5	2.5	5	1
	300A	1A	2	3.75	7.5	1
	400A	1A	2.5	3.75	7.5	1
5A Output	50A	5A	-	-	1	1
	100A	5A	-	-	2	1
	200A	5A	-	1.5	3.75	1
	300A	5A	1.5A	2.5A	3.75	1

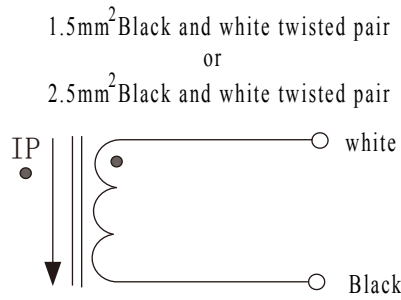
	Input current A	Output voltage V	Accuracy %	Sampling resistor Ω	Load resistance K Ω	number of turns
0.333V Output	50A	0.333V	1%	built-in	>10K Ω	1
	100A	0.333V				
	200A	0.333V				
	300A	0.333V				
	400A	0.333V				

Wiring diagram:



Voltage output type

Secondary are not allowed to short circuit



Current output type

secondary is not allowed to open the way

Cable:

Lead specification:

- 0.3mm²Black and white twisted pair
- 1.5mm²Black and white twisted pair
- 2.5mm²Black and white twisted pair

Lead color: white, Black

Lead length: 1m

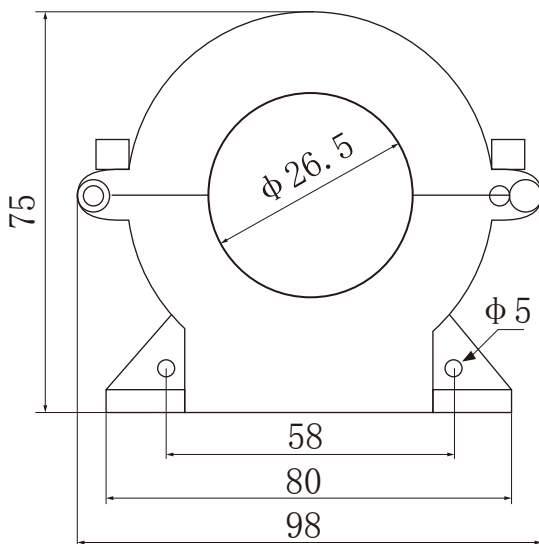
Instructions:

- 1.Primary threading direction: mark by arrow
- 2.Secondary output direction:
white line → black line

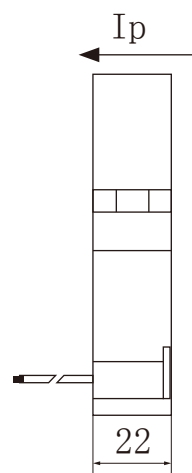
Note:

- 0.333V Output is 0.3mm²Black and white twisted pair
- 1A Output is 1.5mm²Black and white twisted pair
- 50/5 75/5 is 2.5mm²Black and white twisted pair
- 100/5~300/5 is 1.5mm²Black and white twisted pair

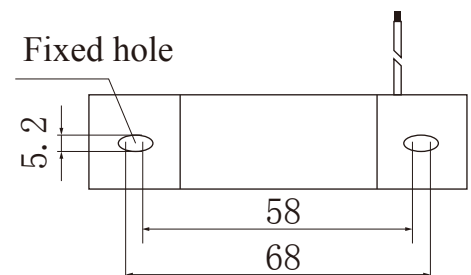
Outline size: (in:mm)



Front view



Side view



Bottom view