



Device Manager

Simple and Efficient Device Management Solution

InHand Networks

www.inhandnetworks.com





CONTENTS



- 01 What Is Device Manager
- 02 Compatible Hardware – InHand Routers/Gateways
- 03 Success Stories
- 04 Pricing – FOR FREE



Challenges in managing communication devices



Difficulty in managing distributed devices



High costs for onsite management



Inefficient monitoring of operation and traffic



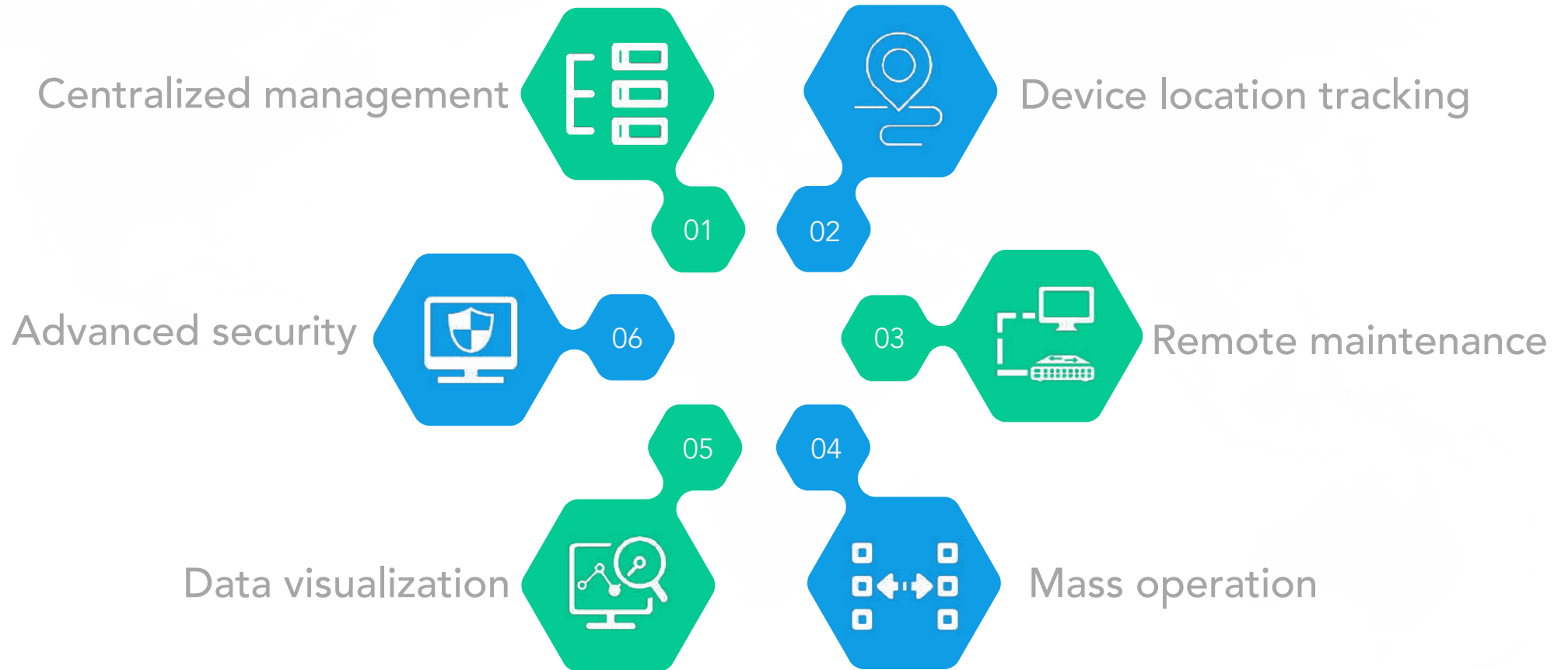
Delay in fault alerts

What is Device Manager?

- Device Manager is a remote management platform for your InHand devices (routers & gateways)
- It features a visualization user interface and simple operation
- Fast integration, one-click management



Why Device Manager?

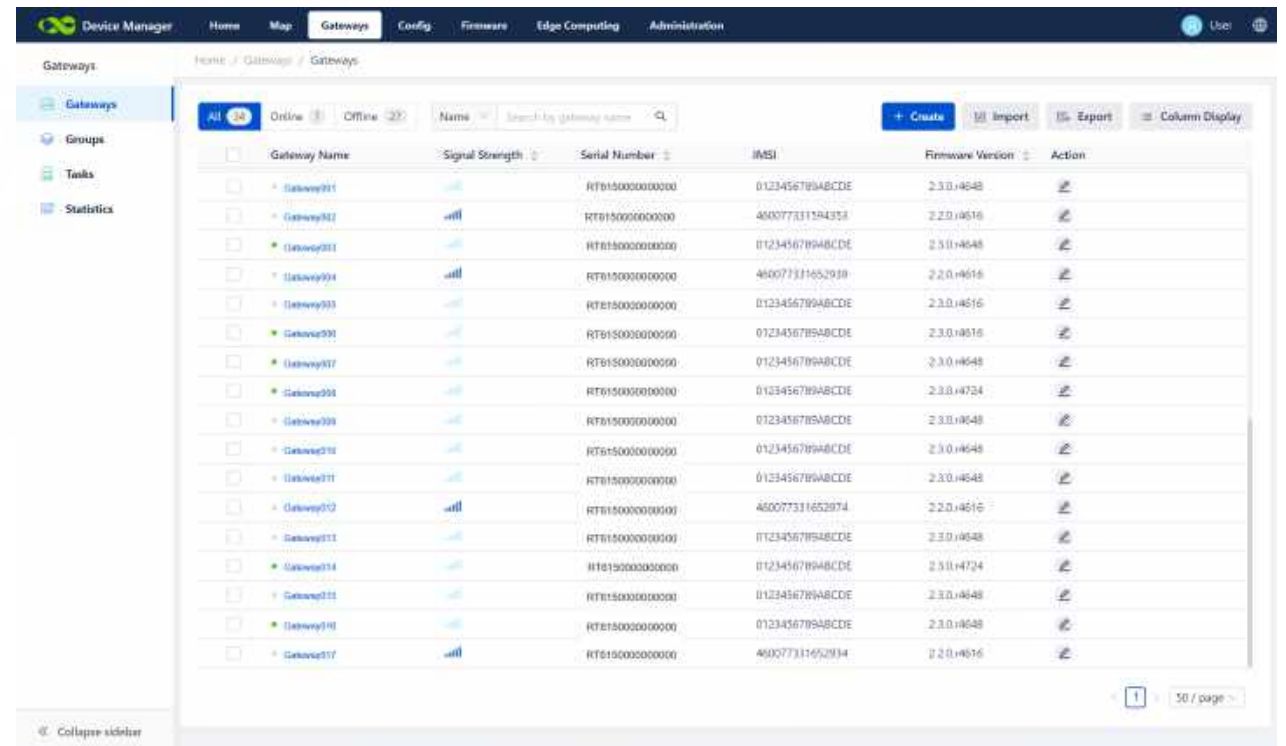


Centralized Management

- Asset information, firmware and configuration, python apps, etc.

Batch maintenance

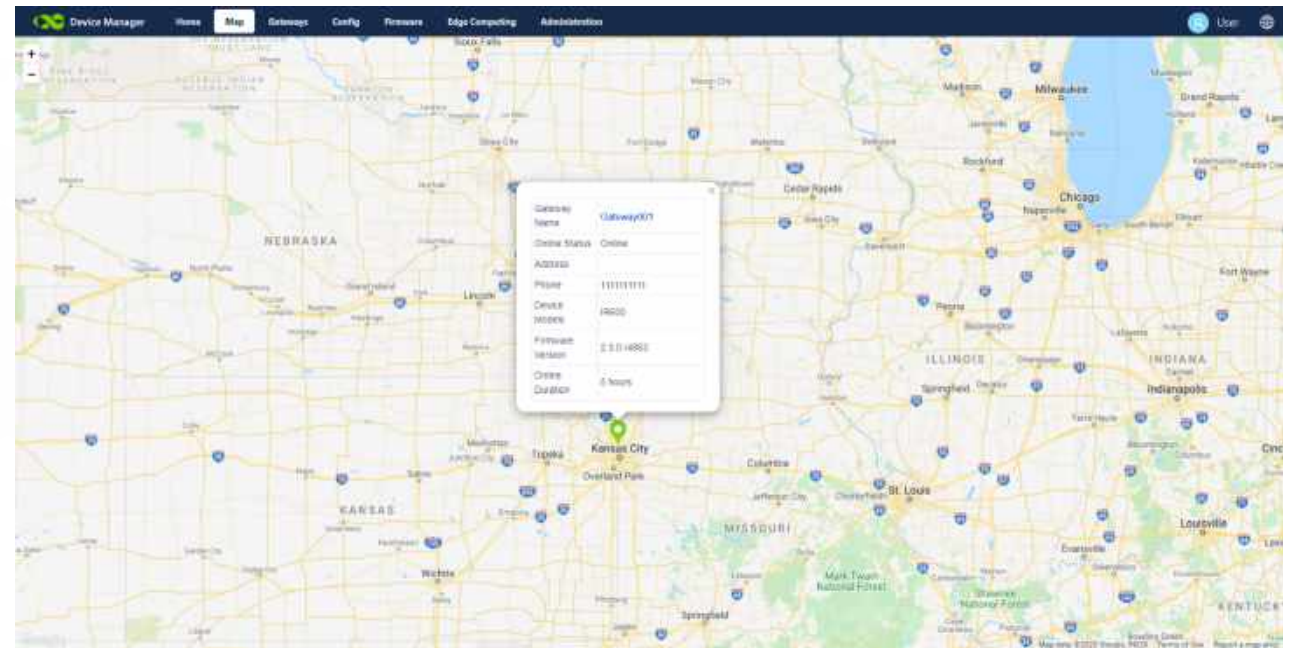
- Configuration update, firmware upgrade based on needs;
- Flexible classification



The screenshot displays the 'Gateways' management page in the Device Manager application. The interface includes a navigation menu on the left with options like 'Gateways', 'Groups', 'Tasks', and 'Statistics'. The main content area shows a table of gateway devices with columns for Gateway Name, Signal Strength, Serial Number, IMSI, Firmware Version, and Action. The table lists 17 gateways, each with a unique serial number and IMSI, and a firmware version. The status of each gateway is indicated by a signal strength icon (e.g., 'Full', 'Weak').

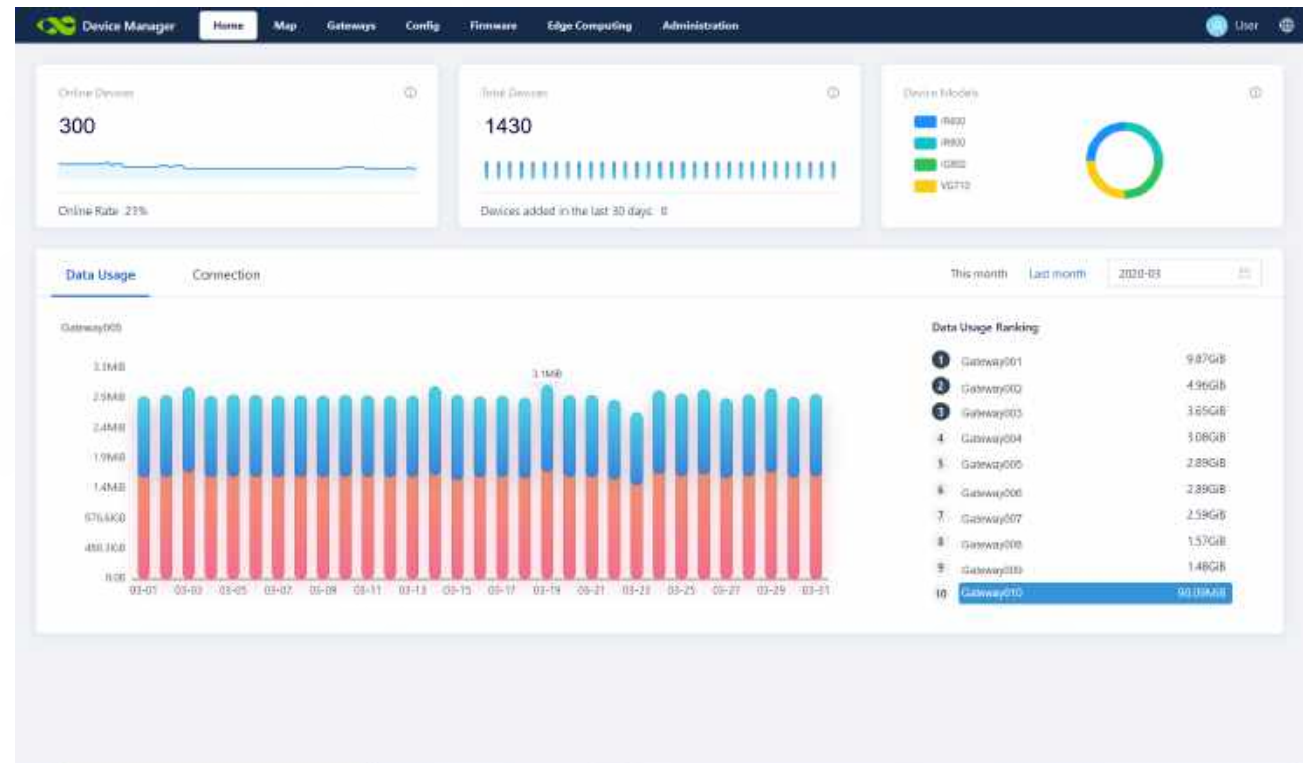
Gateway Name	Signal Strength	Serial Number	IMSI	Firmware Version	Action
Gateway01	Full	RT015000000000	0123456789ABCDE	2.3.0.4648	[Edit]
Gateway02	Full	RT015000000000	46007731144358	2.2.0.4616	[Edit]
Gateway03	Full	RT015000000000	0123456789ABCDE	2.3.0.4648	[Edit]
Gateway04	Full	RT015000000000	460077311452910	2.2.0.4616	[Edit]
Gateway05	Full	RT015000000000	0123456789ABCDE	2.3.0.4616	[Edit]
Gateway06	Full	RT015000000000	0123456789ABCDE	2.3.0.4616	[Edit]
Gateway07	Full	RT015000000000	0123456789ABCDE	2.3.0.4648	[Edit]
Gateway08	Full	RT015000000000	0123456789ABCDE	2.3.0.4724	[Edit]
Gateway09	Full	RT015000000000	0123456789ABCDE	2.3.0.4648	[Edit]
Gateway10	Full	RT015000000000	0123456789ABCDE	2.3.0.4648	[Edit]
Gateway11	Full	RT015000000000	460077311452974	2.2.0.4616	[Edit]
Gateway12	Full	RT015000000000	0123456789ABCDE	2.3.0.4648	[Edit]
Gateway13	Full	RT015000000000	0123456789ABCDE	2.3.0.4724	[Edit]
Gateway14	Full	RT015000000000	0123456789ABCDE	2.3.0.4648	[Edit]
Gateway15	Full	RT015000000000	0123456789ABCDE	2.3.0.4648	[Edit]
Gateway16	Full	RT015000000000	460077311452934	2.2.0.4616	[Edit]
Gateway17	Full	RT015000000000	460077311452934	2.2.0.4616	[Edit]

Device Location Tracking



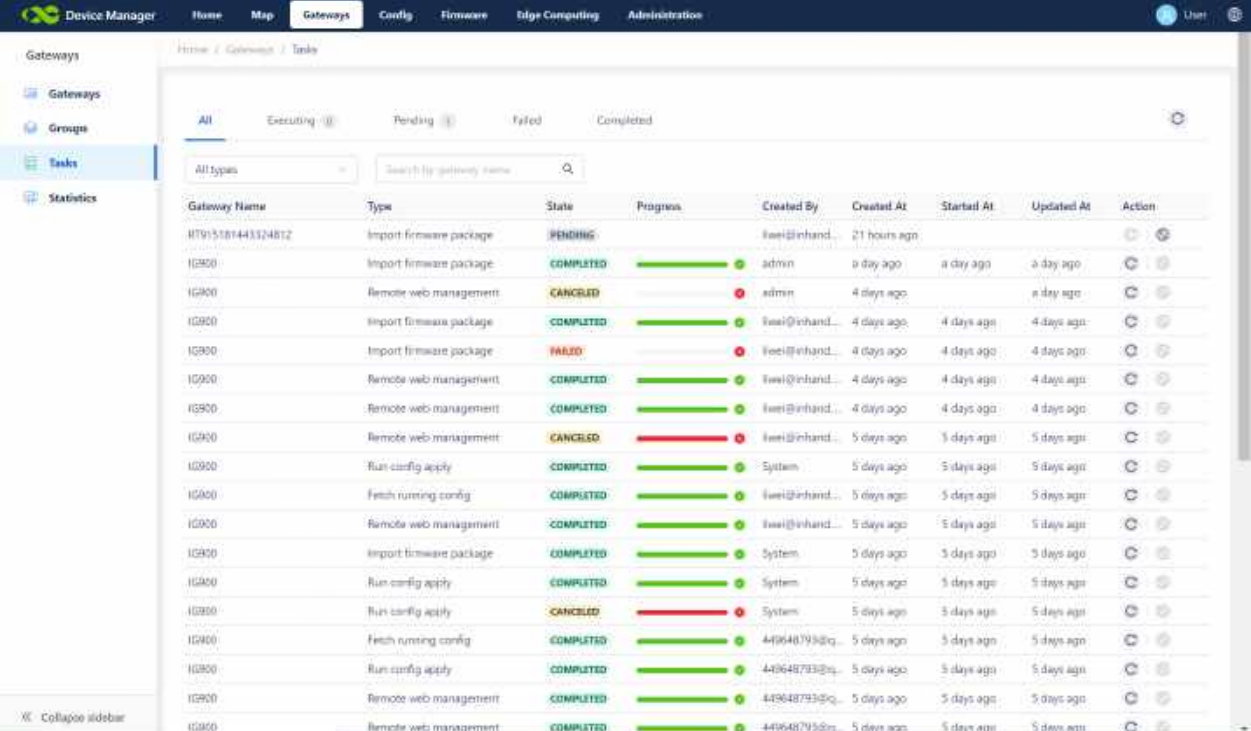
Data Visualization

- Various forms of tables & charts for data traffic and online status monitoring



Operation Monitoring

- Control orders sent by devices;
- Monitor execution processes



The screenshot displays the 'Device Manager' web interface, specifically the 'Tasks' page. The interface includes a navigation menu on the left with options like 'Gateways', 'Groups', 'Tasks', and 'Statistics'. The main content area shows a table of tasks with columns for Gateway Name, Type, State, Progress, Created By, Created At, Started At, Updated At, and Action. The tasks are filtered by 'All types' and 'Executing' status. The table lists various tasks such as 'Import firmware package', 'Remote web management', and 'Run config apply' for different gateway IDs.

Gateway Name	Type	State	Progress	Created By	Created At	Started At	Updated At	Action
RT915181443324RT2	Import firmware package	PENDING		fwel@inhand...	21 hours ago			
IG900	Import firmware package	COMPLETED	<div style="width: 100%;"></div>	admin	9 days ago	9 days ago	9 days ago	
IG900	Remote web management	CANCELED	<div style="width: 100%;"></div>	admin	4 days ago		9 days ago	
IG900	Import firmware package	COMPLETED	<div style="width: 100%;"></div>	fwel@inhand...	4 days ago	4 days ago	4 days ago	
IG900	Import firmware package	FAILED	<div style="width: 100%;"></div>	fwel@inhand...	4 days ago	4 days ago	4 days ago	
IG900	Remote web management	COMPLETED	<div style="width: 100%;"></div>	fwel@inhand...	4 days ago	4 days ago	4 days ago	
IG900	Remote web management	COMPLETED	<div style="width: 100%;"></div>	fwel@inhand...	4 days ago	4 days ago	4 days ago	
IG900	Remote web management	CANCELED	<div style="width: 100%;"></div>	fwel@inhand...	5 days ago	5 days ago	5 days ago	
IG900	Run config apply	COMPLETED	<div style="width: 100%;"></div>	System	5 days ago	5 days ago	5 days ago	
IG900	Fetch running config	COMPLETED	<div style="width: 100%;"></div>	fwel@inhand...	5 days ago	5 days ago	5 days ago	
IG900	Remote web management	COMPLETED	<div style="width: 100%;"></div>	fwel@inhand...	5 days ago	5 days ago	5 days ago	
IG900	Import firmware package	COMPLETED	<div style="width: 100%;"></div>	System	5 days ago	5 days ago	5 days ago	
IG900	Run config apply	COMPLETED	<div style="width: 100%;"></div>	System	5 days ago	5 days ago	5 days ago	
IG900	Run config apply	CANCELED	<div style="width: 100%;"></div>	System	5 days ago	5 days ago	5 days ago	
IG900	Fetch running config	COMPLETED	<div style="width: 100%;"></div>	449648793@iq...	5 days ago	5 days ago	5 days ago	
IG900	Run config apply	COMPLETED	<div style="width: 100%;"></div>	449648793@iq...	5 days ago	5 days ago	5 days ago	
IG900	Remote web management	COMPLETED	<div style="width: 100%;"></div>	449648793@iq...	5 days ago	5 days ago	5 days ago	
IG900	Remote web management	COMPLETED	<div style="width: 100%;"></div>	449648793@iq...	5 days ago	5 days ago	5 days ago	

Effortless Setup

Easy as 1-2-3:

1. Register Device Manager (<https://iot.inhandnetworks.com>)
2. Configure InHand routers/gateways
3. Start monitoring and managing your devices

For more information, please refer to *[Device Manager User Manual](#)*.



Secure & Reliable Service

- AWS cloud deployment;
- Multiple security technologies integrated in InHand routers & gateways



PART 02

Compatible Hardware

Supports connection to InRouter600-S, InRouter900, InGateway900, InVehicle G710 series products

Compatible InHand Devices

Product	Cellular Network	LAN/WAN	WIFI	GPS	Serial Port	I/O Port	CanBus	Coverage	Certification
InRouter912	Dual SIM	2* 10/100Mbps WAN/LAN						Global	CE, FCC, UL, PTCRB, CCC, Verizon Wireless, AT&T, E-MARK, IC, IMDA, RCM
InRouter611-S	Single SIM	1*10/100Mbps LAN/WAN	802.11b/g/n		✓			Global	CE, FCC, PTCRB, IC, RCM, SDPPI, AT&T, T-Mobile, Verizon Wireless
InRouter615-S	Dual SIM	1*10/100Mbps WAN 4*10/100Mbps LAN	802.11b/g/n		✓			Global	CE, FCC, PTCRB, IC, IMDA, RCM, Verizon, AT&T, T-Mobile, Class I Division 2
InRouter915	Dual SIM	1* 10/100Mbps WAN/LAN 4*10/100Mbps WAN/LAN	802.11b/g/n	✓	✓	✓		Global	CE, FCC, UL, PTCRB, CCC, Verizon Wireless, AT&T
InGateway900	Dual SIM	2*10/100/1000Mbps WAN/LAN or 2*LAN	802.11 ac/a/b/g/n	✓	✓	✓		Global	CE, IC, FCC, PTCRB, Verizon Wireless, AT&T
InVehicle G710	Dual SIM	4*10/100/1000Mbps RJ45	802.11ac/a/b/g/ n	✓	✓	✓	✓	Global	CE, FCC, IC, RCM, PTCRB, IMDA

InRouter600-S Industrial LTE Router

InRouter611-S / InRouter615-S



- All industrial-grade design, EMC level 3
- 1/5*ETH port, 1*serial port
- 4G LTE/3G, Ethernet, Wi-Fi
- IPsec VPN, DMVPN, L2TP, OPEN VPN
- Compact, easy for installation, wall/panel mounting



PTCRB



T-Mobile

Sprint

InRouter900 High-level Industrial Router

InRouter912 / InRouter915



- All industrial-grade design, DIN rail installation, EMC level 4
- 2/5* Ethernet port, 2* serial port, 2*I/O
- 4G LTE/3G, Ethernet, Wi-Fi
- IPsec VPN, DMVPN, L2TP, OPEN VPN
- Python programmable



AWS Greengrass

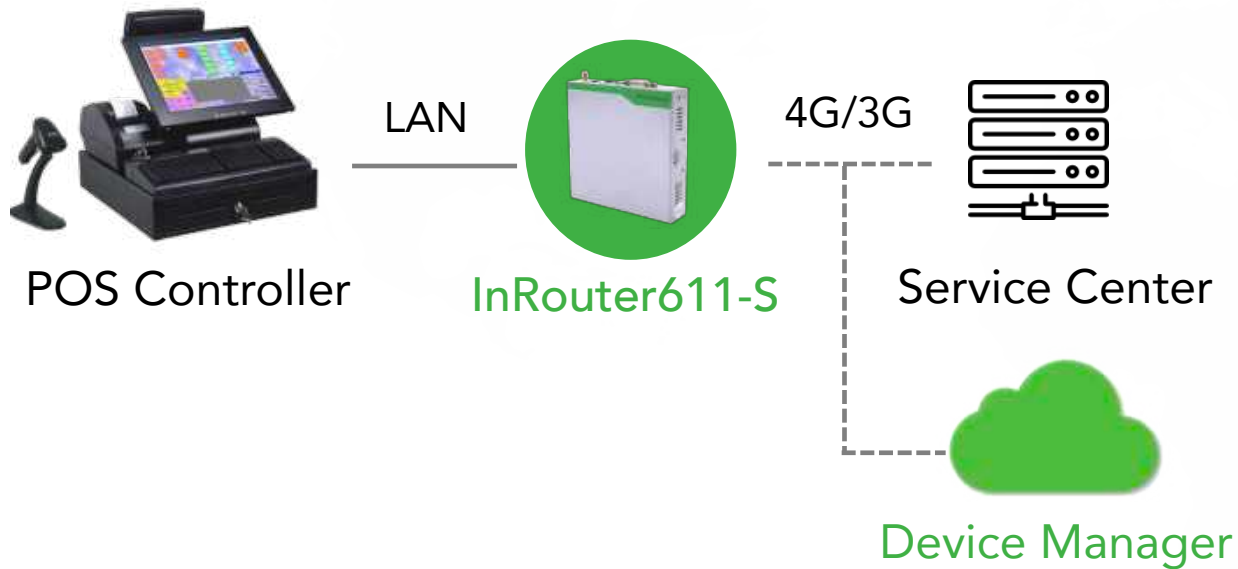
InGateway900 Edge Computing Gateway

IG902-B / IG902-H



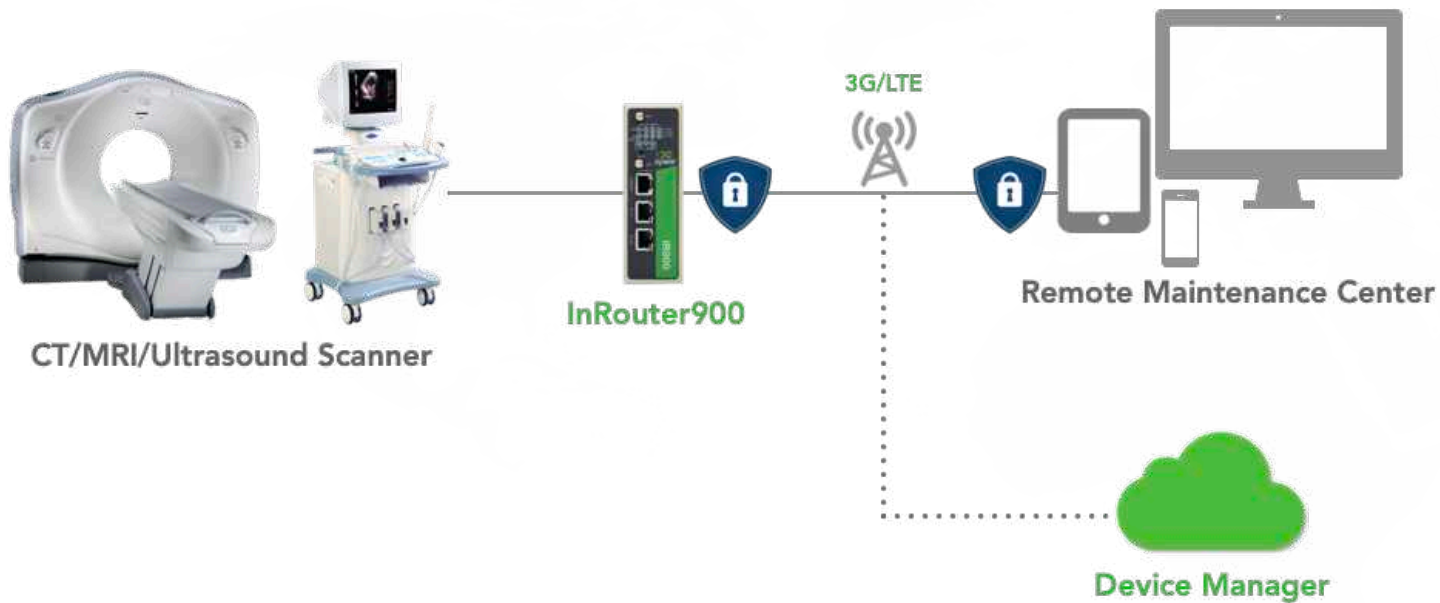
- All industrial-grade design, DIN rail/wall mounting, EMC level 3
- 2*Ethernet port, 2*serial port, 2*I/O, 2*industrial protocol port
- 4G LTE, 3G, ADSL, Ethernet, Wi-Fi
- IPsec VPN, CA, OPEN VPN
- Python programmable
- Multiple industrial protocols supported: Modbus TCP, Modbus RTU, OPC UA, PROFINET, PROFIBUS-DP, EtherCAT, EtherNET/IP, CC-LINK, PPI





Solution: LTE router IR611-S + Device Manager

- Real-time monitoring of network and data usage
- Batch upgrade of InRouter's firmware
- View geo locations of POSs
- Batch configuration
 - Remote VPN config.



Solution: Industrial LTE router IR900 + Device Manager

- Real-time monitoring of network and data usage
- Batch upgrade of InRouter's firmware
- Batch configuration
 - Remote VPN config.
 - Remote update of CA
- -Monitor locations of InRouters

The Device Manager is **FOR FREE**.

Address: <https://iot.inhandnetworks.com>



InHand Networks is a global leader of Industrial IoT, with a record of tremendous success following groundbreaking innovation since our inception in 2001.

InHand serves world-class partners and customers with industrial M2M routers, gateways, industrial Ethernet switches, rugged computers and IoT management platforms. We provide IoT solutions for various vertical markets including Smart Grid, Industrial Automation, Remote Machine Monitoring, Smart Vending, Smart City, Retail and more.

Proudly bearing the marks of AWS Select Technology Partner, Schneider Electric TPP Certified Technology Partner, and Rockwell Automation Encompass Product Partner in Asia-Pacific, InHand Networks defines industrial innovation and reliability.

Website: <https://www.inhandnetworks.com/>

Device Manager

Empowering Your Business



InHand Networks

www.inhandnetworks.com

