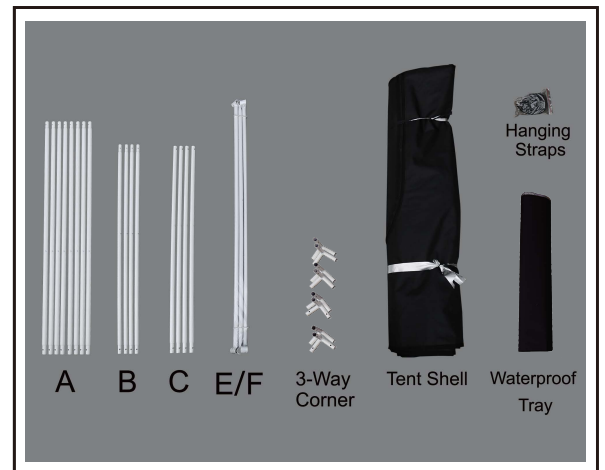
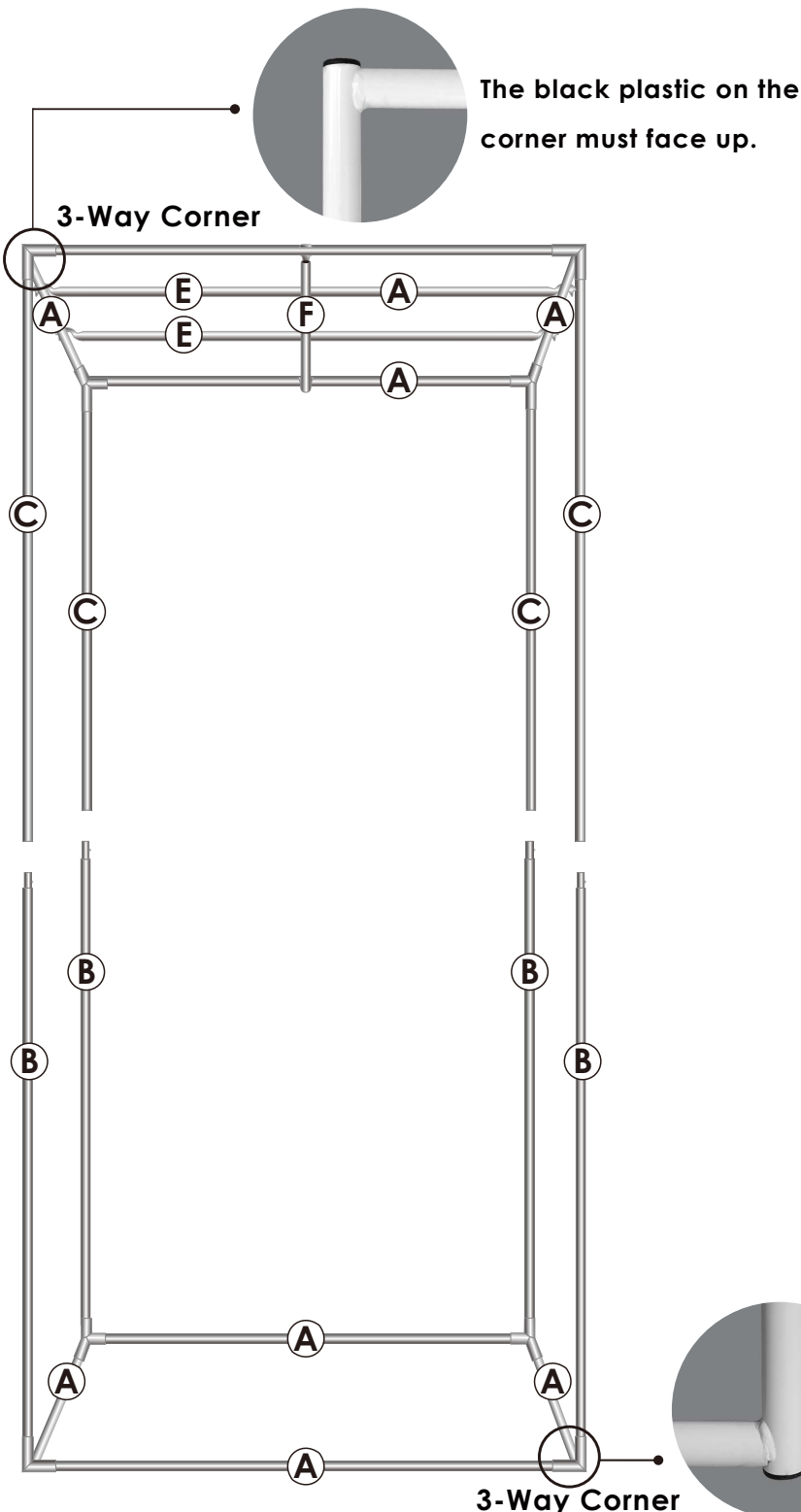


Dear users,

Thank you for choosing our VIPARSPECTRA Hydroponic Grow Tent. This is a high quality and safe product which is designed especially for horticulture industry. It will offer you ultimate control over your plants' environment, result in strong and healthy plants with increased yield. Please read this instruction carefully before using. If you need any assistance, please email us (support@viparspectra.com) as soon as possible.

Before you start

Open the box, lay all the components out on the floor to identify them, then check your components against the table of Package Included.



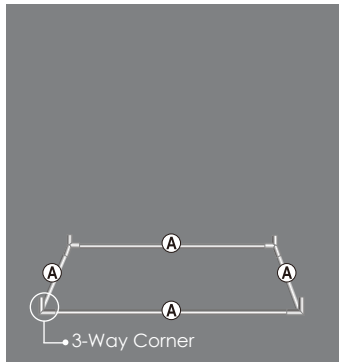
48"x48"x80" Grow Tent

Package Included:

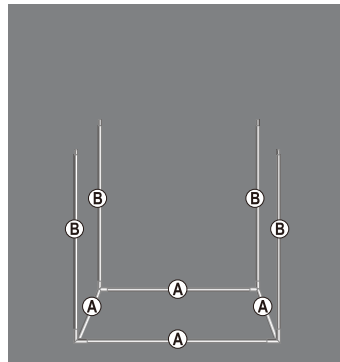
Tube-A	8
Tube-B	4
Tube-C	4
Roof Bar-shallow-E	2
Roof Bar-deep-F	1
3-Way Corner	8
Tent Shell	1
Waterproof Tray	1
Hanging Straps	3
Instruction Manual	1

The black plastic on the corner must face down to the floor.

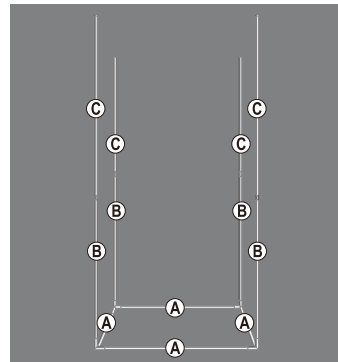
Assembly Instructions



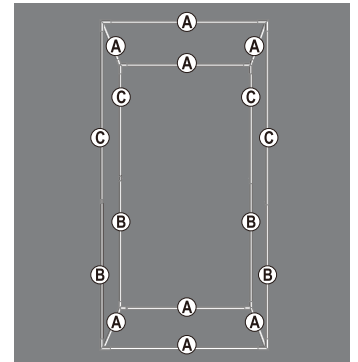
Step 1



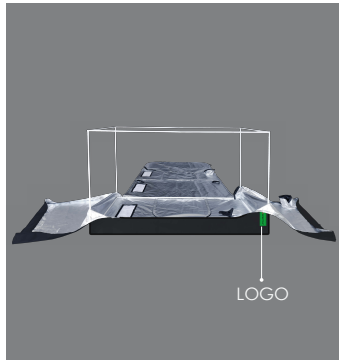
Step 2



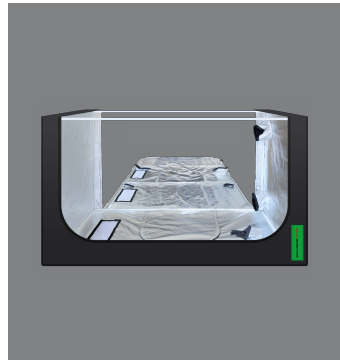
Step 3



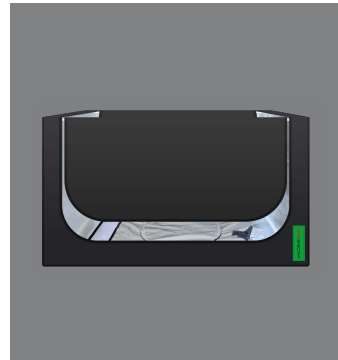
Step 4



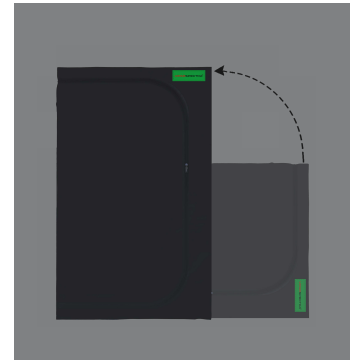
Step 5



Step 6



Step 7



Step 8

Step 1. Make up floor frame, you will need Tube-A x 4, 3-Way Corner x 4.

Insert Tubes-A to 3-Way Corners. The black plastic on the corner must face down to the floor.

NOTE: Put all tubes' poles completely into 3-Way Corners, lock them tightly by the spring button clips.

Step 2. Insert Tube-B to 3-Way Corners, you will need Tube-B x 4.

Step 3. Put Tube-C on Tube-B, you will need Tube-C x 4.

Step 4. Construct upper frame, you will need Tube-A x 4, 3-Way Corner x 4.

Insert Tubes-A to 3-Way Corners. The black plastic on the corner must face up.

Step 5. Lift the frame into the tent shell.

Lay down the tent shell on the floor, open out to its full size. Lift the frame into the tent shell and fit each corner.

Step 6. Pull the tent shell's bottom (left side) and top (right side) upward to cover the frame's corners.

Step 7. Stretch the rest of tent shell to cover the frame completely, zip up all zippers.

Step 8. Hold the tent stand up.

Step 9. Install Roof Bars. You may need Roof Bar-E x 2, Roof Bar-F x 1.

Open the door of tent, install Roof Bar-E and F to the top of tent. Roof Bar-E has smaller hooked ends and suitable for hanging lights.

Roof Bar-F was designed to support items such as carbon filters, which can be either hung using the straps provided, or attached directly to the roof bars.

Step 10. Fit the waterproof tray.

Spread out and locate the waterproof tray inside the bottom of the tent. The tray has a velcro tape at each corner for attachment to the uprights. Attach them securely and smooth into place.