

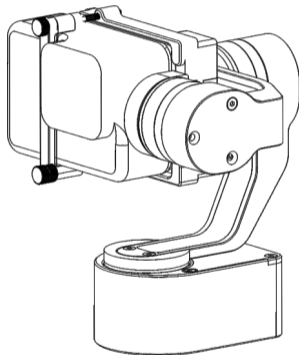
XG1 *Classic*

3-Axis Wearable Stabilizing Gimbal
for Action Camera
Quick Start Guideline V1.0



@Hohem-Tech

Get more tutorial video



hohem

DISCLAIMER

- *Please use the product in accordance with the user guide.
 - *Make sure your camera device is mounted before powering on the gimbal.
 - *Keep the gimbal away from fire and heat source.
 - *Prohibiting the product to be used for any illegal purpose. The user who violates the regulation will be responsible for all the consequences by purchasing and using the product.
 - *For any products which comes from non-normal source, we will not be at any service.
 - *For any question, please contact the technical support of Hohem Tech. We will be always at your service to provide the technical support and advice for any improper using of gimbal.
 - *Hohem Tech reserves the right of final explanation.
-



Hohem Technology Co., Ltd

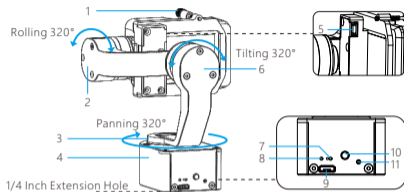
Tel: +86-755-86573216

Email: service@hohem-tech.com

Web: www.hohem-tech.com

Addr: B106, University Creative Park, Xili, Nanshan,
Shenzhen, 518055, P.R. China

Product Overview



- 1.Thumb Screw
- 2.Tilt Motor
- 3.Pan Motor
- 4.Battery Building in The Base
- 5.Camera Charging Port
- 6.Roll Motor
- 7.Working Status Light
- 8.Bluetooth Light
- 9.USB Port
- 10.Function Button (Power on/off)
- 11.Reset Hole

Accessories List



Stabilizer*1



Handbag*1



Tripod*1



USB Cable*1



T-Type connector*1



Screwdriver*1



Screw*2

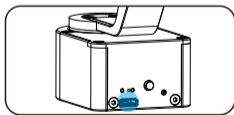
Download APP——Hohem Gimbal



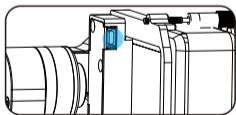
- * Scan QR code to download the app.
- * Hohem Gimbal supports iOS 9.0 and Android 5.0 or above.
- * Search for 'Hohem Gimbal' in the App Store or Google Play and follow the instructions to install the app.

Gimbal Charging

Charge the gimbal fully before using it for the first time.



*Micro USB Port: Gimbal charging port

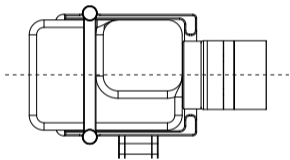


*Mini USB DC out Port:
Actioncam charging port

(It can be enabled
in the App Setting
-Camera options
-Charging Function)

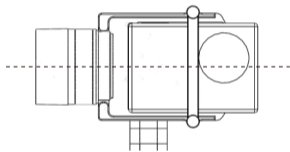
Quick Installation

*No need additional counter weight. Without power on, the gimbal can get the best self-balance status by setting the right position of the motors and camera placements.



GoPro Hero 5/6/7
(The lens next to the tilt motor)

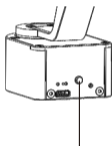
Put the tilt motor to the RIGHT side, place camera closely to the back clip as picture and tighten the knob to secure its position.



GoPro Hero 3/4/DJI OSMO Action/YI /
SJCAM Or other action camera of
similar size (The lens is opposite to the
tilt motor)






Place camera closely to the clip as picture show and tighten the knob to secure its position.

Operation Instruction



Function Button

*Power On/ Off
Long press for 3 seconds

Mode Button	Working Mode (Model Light)	Schema	Instruction
Single Tap	.PF Pan Following (Flash once, quick flash)		Default mode, tilt & roll axis both locked, camera is able to move to left or right smoothly.
Double Tap	..PTF Pan& Tilt Following (Flash twice)		Roll axis locked, camera is able to move to left/right, and tilt up/down.
Triple Tap	...AL All Locked (Flash triple)		The camera stays in its current orientation.
Quartic TapAF All Following (Flash once, slow flash)		Tilt axis, roll axis and pan axis all follow.
Tap for 5 Times	Calibration Mode (Light on)		It requires to calibrate the gimbal only when you notice any kind of not level or drift on any of the axes.

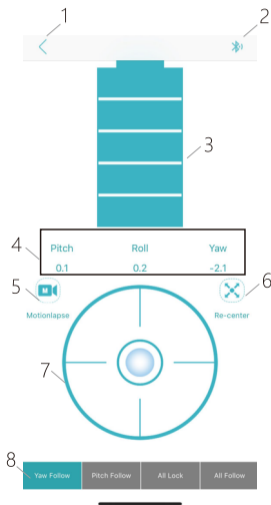
App "Hohem Gimbal" Instruction

Bluetooth Connection

- A. Enable the Bluetooth on the smartphone.
- B. Open the app, choose the product model and confirm into Bluetooth connection.
- C. Make sure the gimbal indicator keeps on.

Main App Functions

1. Home
2. Bluetooth
3. Power Status
4. Axis angle display in sync
5. Motion Timelapse
6. Re-center
7. Remote Control
8. Switch Work Mode



App "Hohem Gimbal" Instruction

Other App Functions

1. Gimbal Specs Setting:

A. Following Speed (To adjust the following speed of pan/tilt/roll axis)

B. Joystick Speed (To adjust the rotating speed by control the joystick)

C. Following Dead Area (No following movement when the rotate angle is less than dead area setting)

D. Trim (Adjust the tilt/roll axis in small angle)

E. Joystick Reverse (Reverse the rotation direction by control the joystick)

F. Motor Options (To adjust the motor torison of pan/tilt/roll axes, which is useful to solve the vibrate issue due to lightweight or overweight actioncam)

G. Camera options: enable/disable charging output of gimbal mini USB port;

2. Firmware Upgrade: The firmware is subject to upgrade without a fixed schedule. Firmware upgrade is help to optimize the working of gimbal, please refer to page 9 for details.

3. Calibration: It requires to calibrate the gimbal only when you notice any kind of not level or drift on any of the axes, please refer to page 8 for details.

4. Operation Tutorial: For any questions, please refer to the user guide for details, the content is subject to change without prior notice.

Calibration

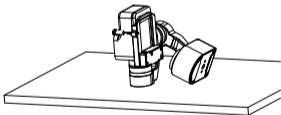
It requires to calibrate the gimbal if you notice it is not work properly as below.

1. The pitch angle is not level with the horizontal surface.
2. The roll angle is not parallel to the horizontal surface.
3. The pan axis drifts when the gimbal is on all lock mode.

Calibration Instruction

Method 1: Off-line Calibration

- (1) Power on the gimbal, tap mode button for 5 times till the mode light on.
- (2) Laying the gimbal on a static flat surface without any vibrate. Calibration is completed once the mode light flash twice.



*If the off-line calibration is not useful, please refer to **【Method 2】**

Method 2: 6-Side Calibration Via App

Please make sure the gimbal is connected with app via bluetooth successfully, then enter "Calibration" and follow the instruction in the app to calibrate the gimbal.

Firmware Upgrade

Please visit the official website www.hohem-tech.com at Product Support page of XG1 Classic and download the Firmware Upgrade Guide.

FAQ

Q: Why the gimbal vibrates after powering on?

A: Make sure your actioncam is mounted firmly and well balanced before powering on the gimbal, do not turn on the gimbal without a balanced load, as doing so many damage the motors, please refer to page 4 for more details.

For some lightweight actioncam, it needs to adjust the motor torsion, please refer to page 7 for details.

Q: How to connect the gimbal via app?

A: Please be noted that the bluetooth and gimbal must be connected directly in the app "Hohem Gimbal", rather than connecting in the smartphone bluetooth list.

Make sure all the permission is allow when you open the app for the first time.

Please refer to the tutorial video on our YouTube channel for more details.

Q: How to do if the gimbal is not level or drift after powering on?

A: Please refer to page 8 for details.

Parameters

Weight	230ginclude battery
Main Material	Aluminium Alloy
Payload	120g
Camera Size Supported	Max. Width: 44.5mm Max. Thickness:27mm
Supported Actioncam	GoPro Hero 7/6/5/4/3, DJI OSMO Action, SONY Rx0, YI, SJCAM, and other action camera with similar size and weight.
Splash Proof	No
Battery Capacity	1100mAh
Working Time	2 hours
Charging Time	2 hours
Mechanical Range	Panning : 320°
	Rolling : 320°
	Tilting : 320°
Working Temperature	-10~45 °C
Standard Accessories	Tripod, Carry case, USB cable (for charging gimbal) T-Type connector, Screwdriver, Screw

Warranty Card

1. 15 days upon date of purchase, if there is a function problem, the commodity and package without any damage, after we check and confirm, we will offer the same product for replacement.
2. Warranty valid only under normal use.
3. Used in the normal circumstances, 1 year warranty, maintenance of life (not include the All accidents or man-made damage, teardowns or misuse damage is outside the scope of the warranty).
4. All accidents or man-made damage, teardowns or misuse damage is outside the scope of the warranty.

User Name:

Contact NO.:

Address:

Purchase Date:

Prod. Serial NO.:

Failure issue:

Service Record: