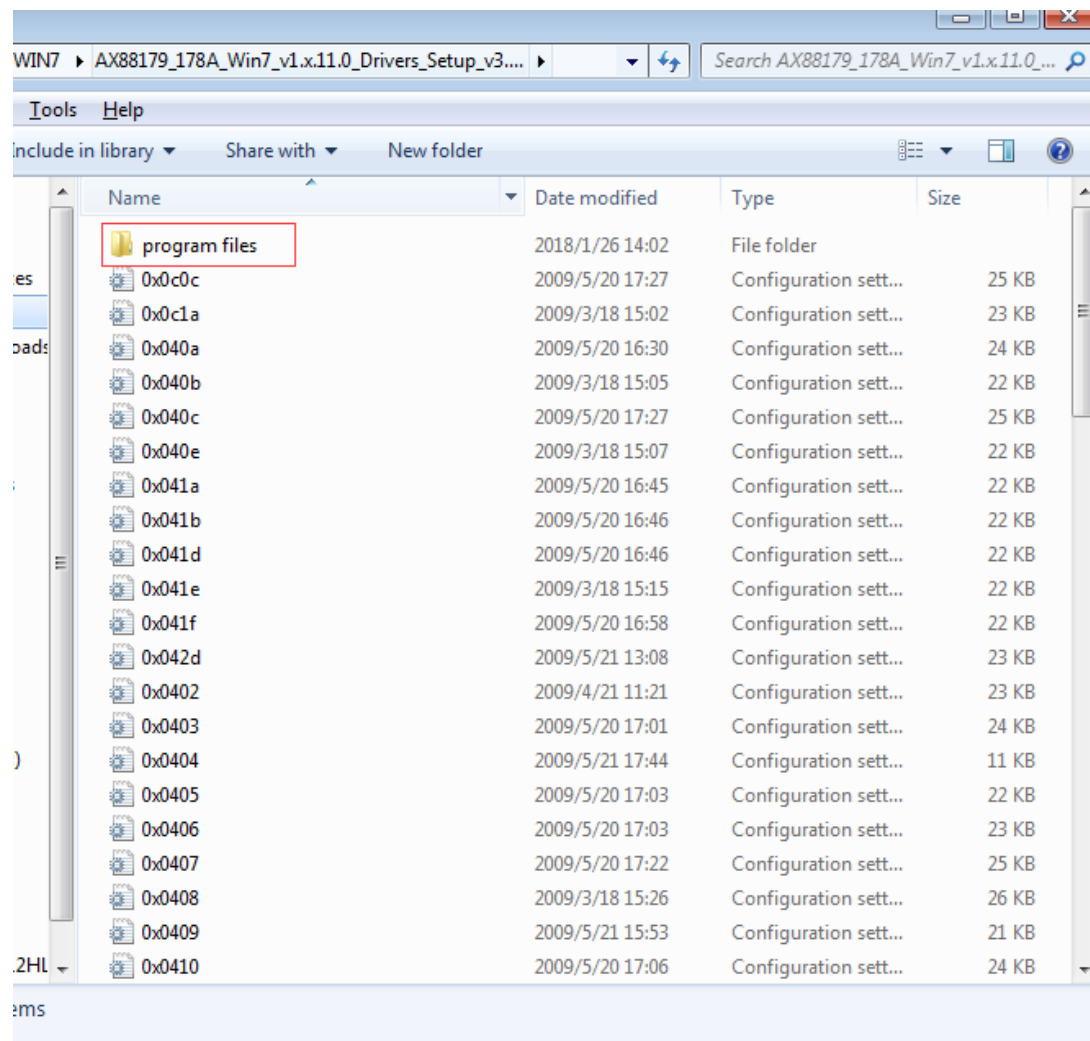
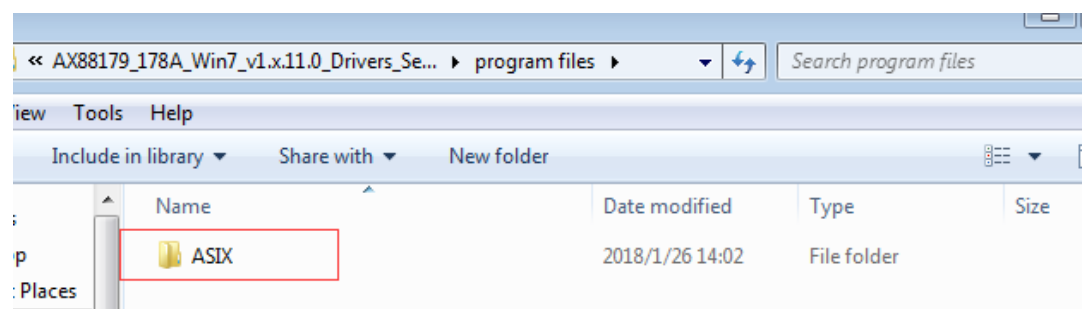


Driver Installation Instruction Guide

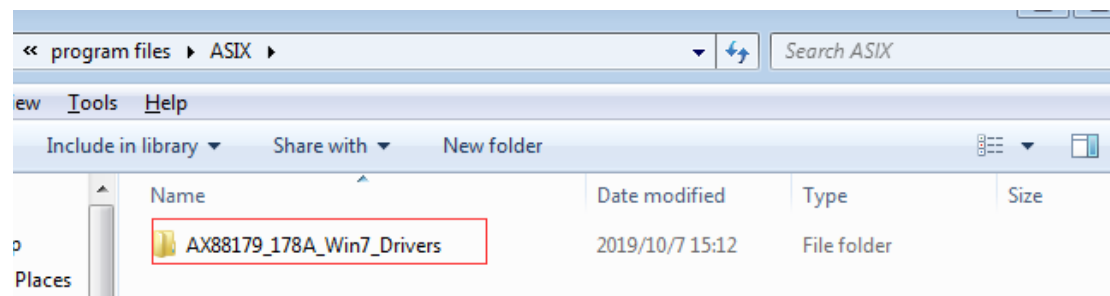
Step 1: unzip the downloaded file, then double-click the folder of “program files” .



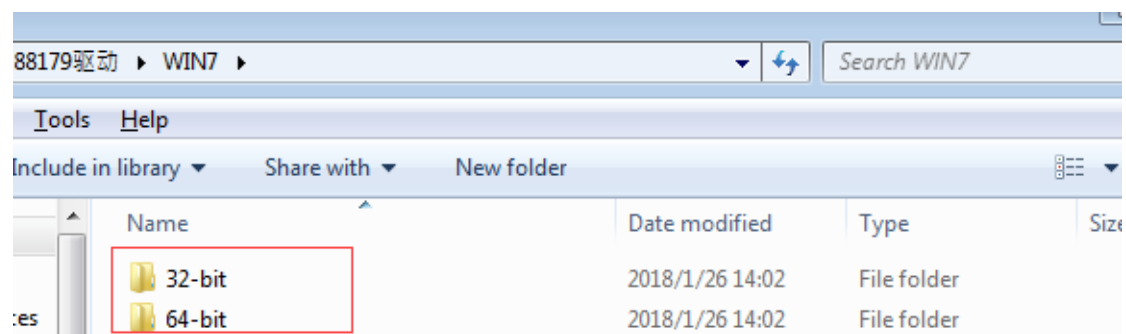
Step 2: Double click the “ASIX” .



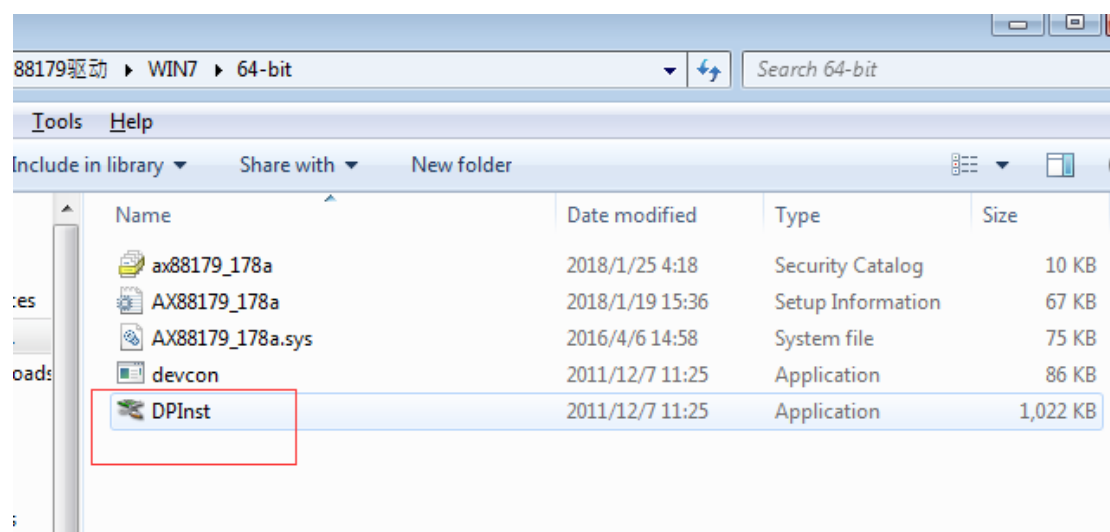
Step 3: Double click the “AX88179_178A_Win7_Drivers” .

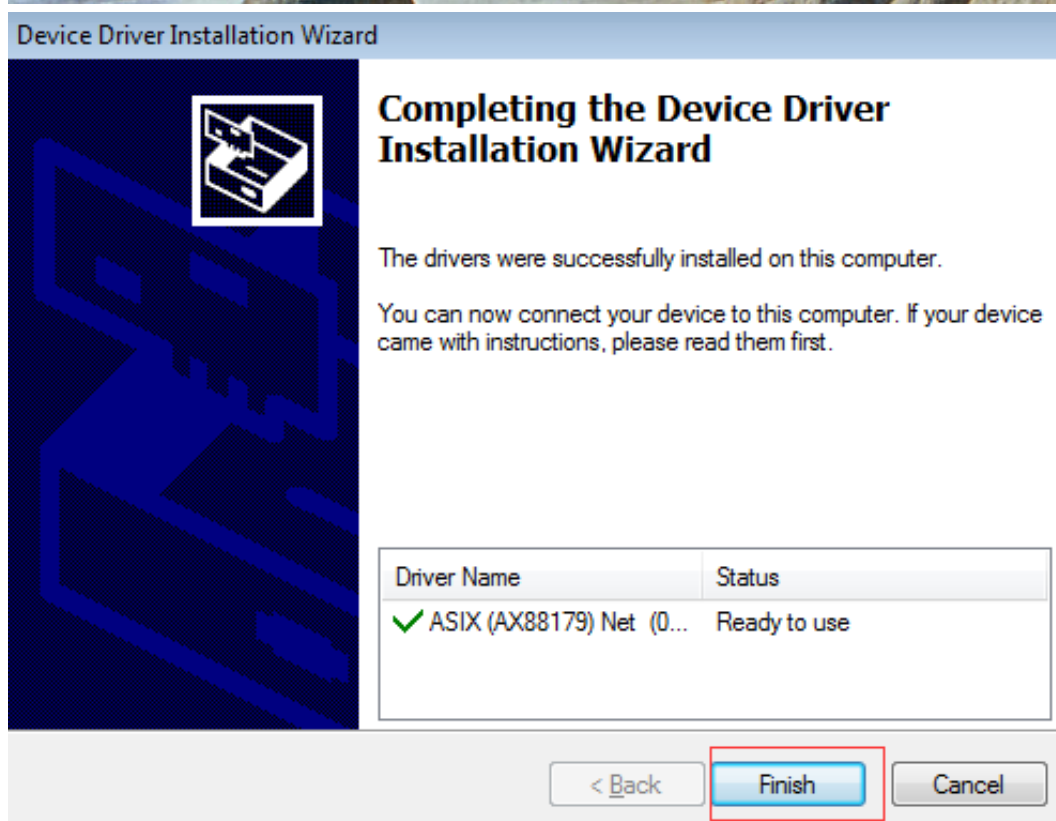
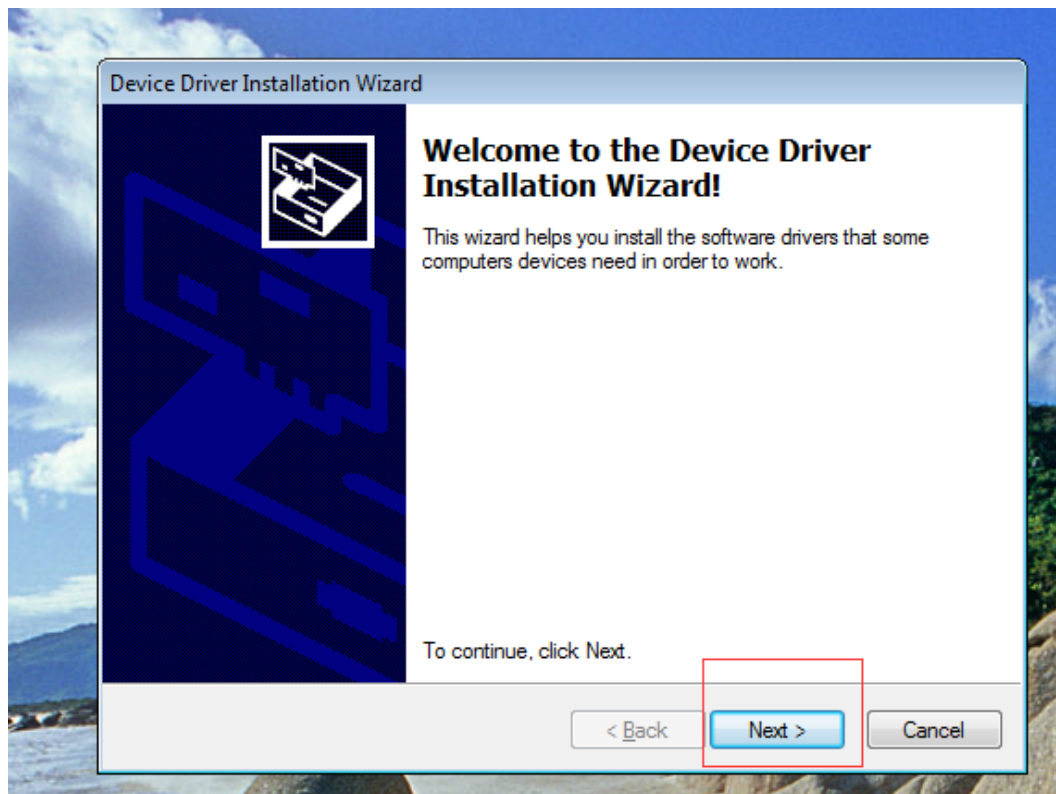


Step 4: Depending on your computer' s OS version, choose “32-bit” or “64-bit” , and then go to the next level directory.



Step 5: Double click the “DPInst” and follow the wizard instruction to start the installation .





The installation is complete.