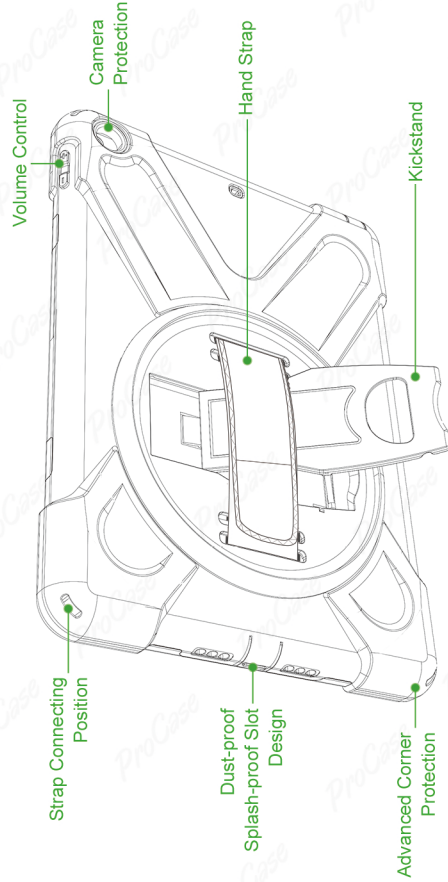
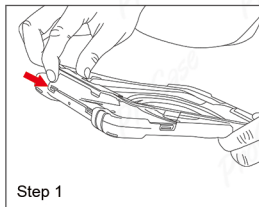


# HEAVY DUTY RUGGED CASE

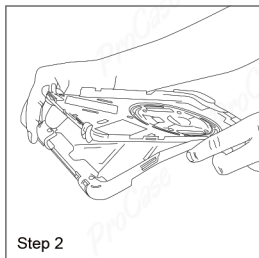


## PIRATE SERIES TABLET CASE User Guide

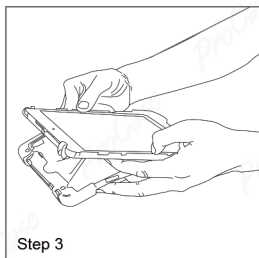
# Installation Guide



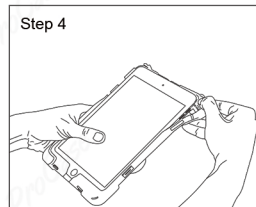
Remove the front frame according to the position pointed out by the arrow.



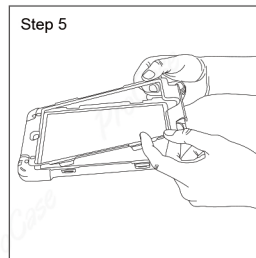
Separate half of the silicone cover from the PC case.



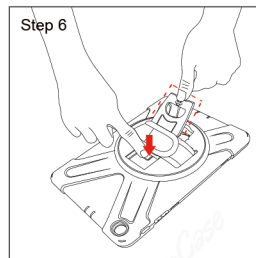
Place the tablet into the PC case.



Reinstall the silicone cover to the original location.



Put the front frame back and lock it on. (Attention: please be sure that every port's locations are in the right place.)



Press the button that the arrow point out, then close the kickstand easily.