

# CORE DRIVE

## Firmware Update Instructions

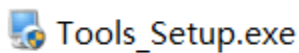
App Download Link: <https://skullnco.com/pages/support-download>

System: Windows 7 and Windows 10

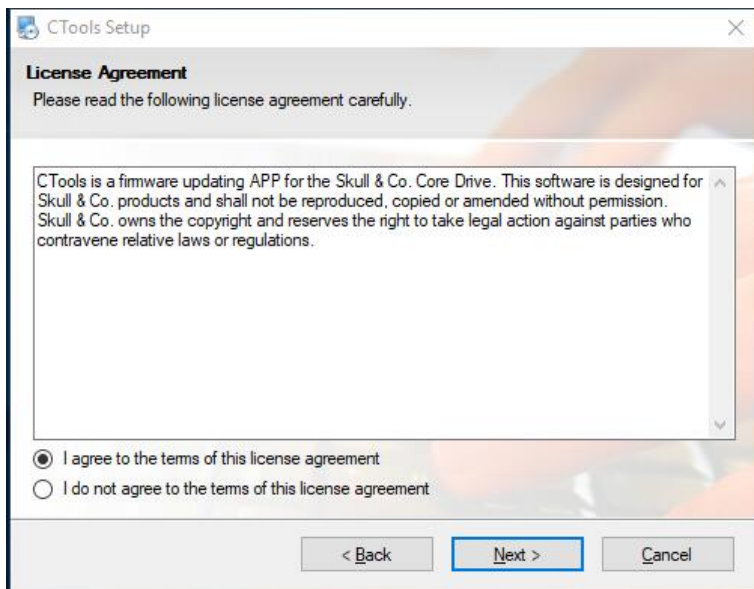
## Installation

1. Download file on Skull & Co. website  
<https://skullnco.com/pages/support-download>

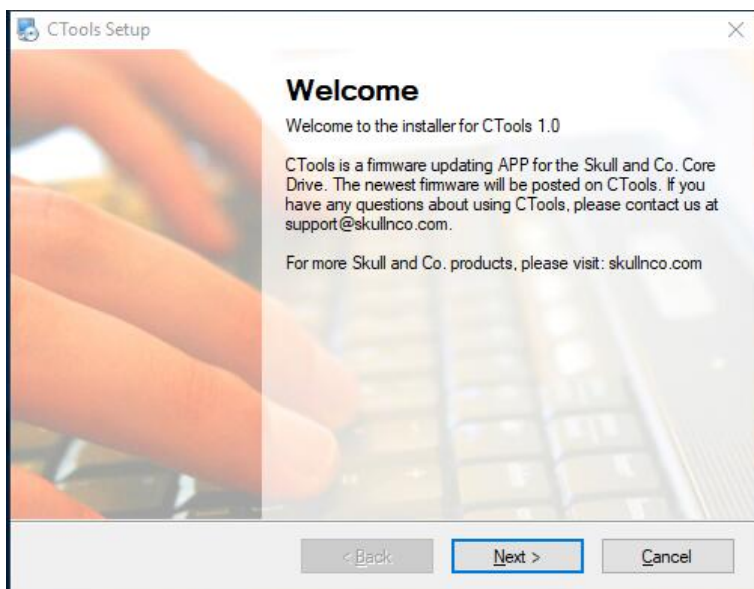
2. Double click the exe file to start installing the App.



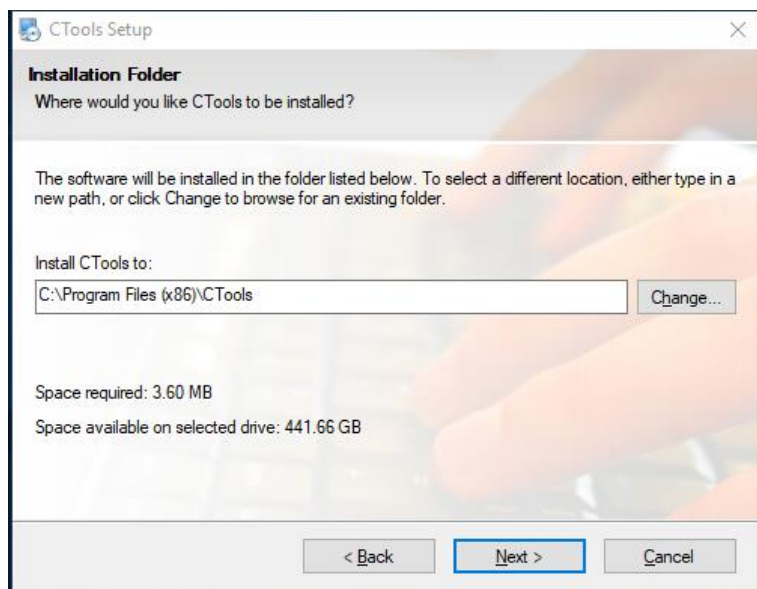
3. Select “I agree” and click “Next”.



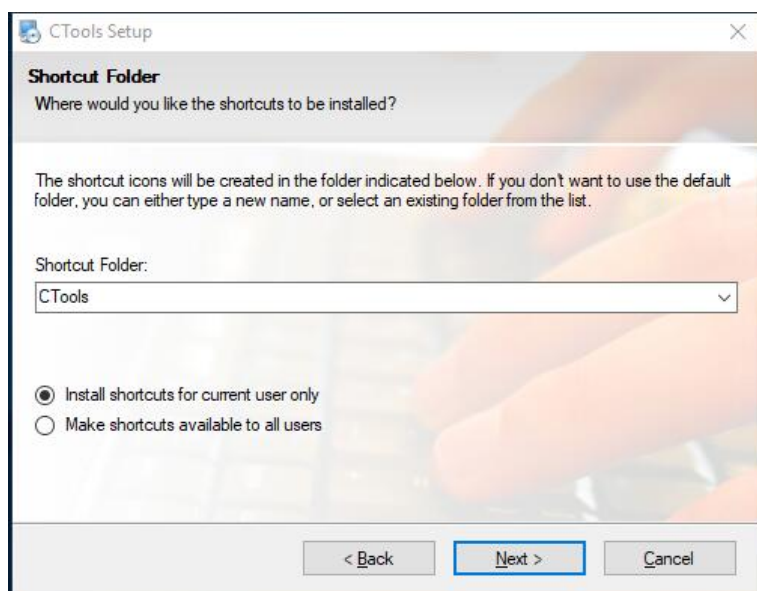
4. Click “Next”.



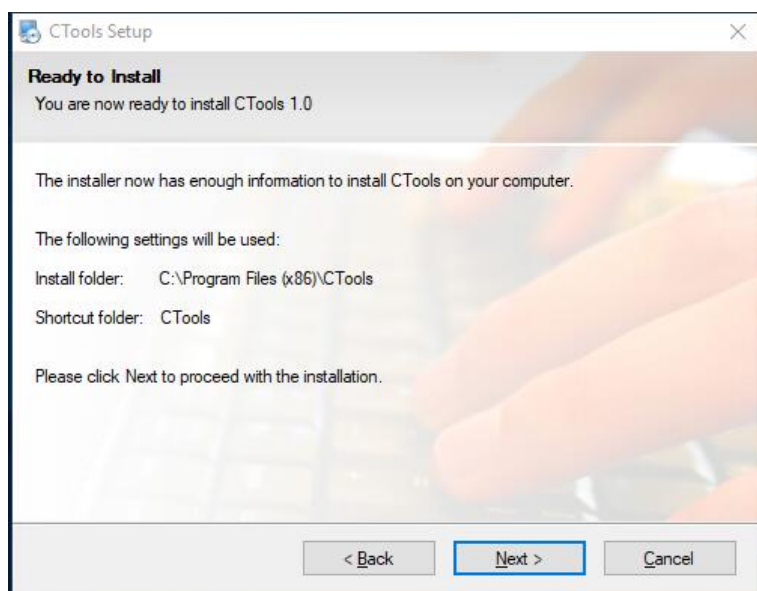
5. Choose the path and click “Next” to install the App.



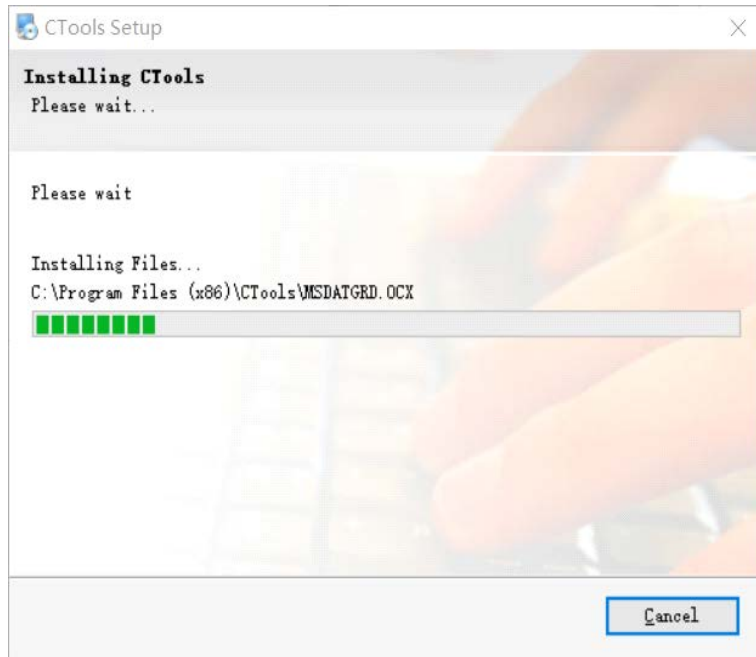
6. Select “for current user” or “all users” and click “Next”.



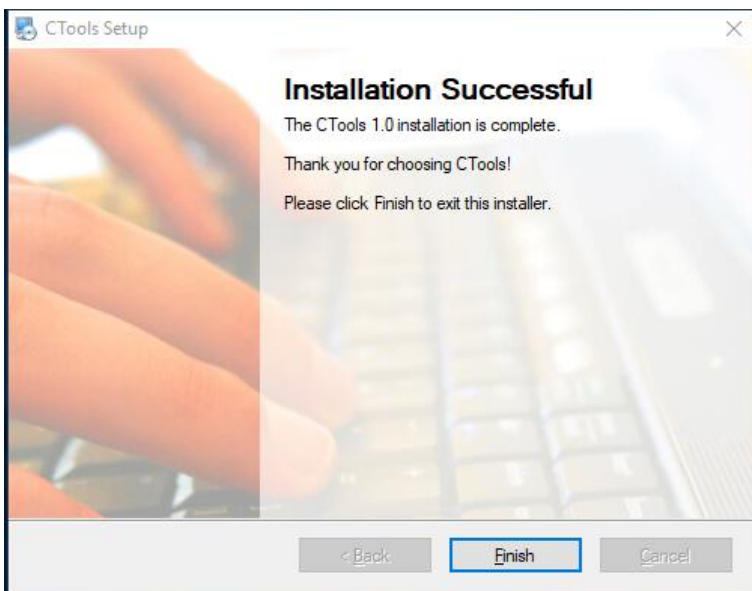
7. Click “Next”.



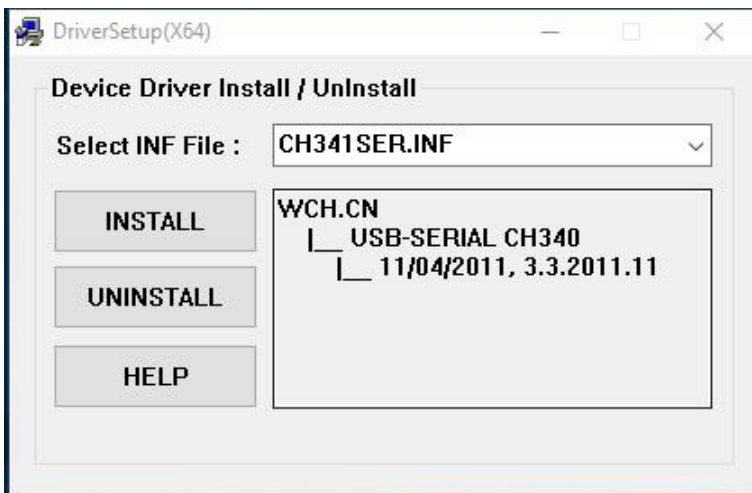
8. Wait for the APP to install 100%.



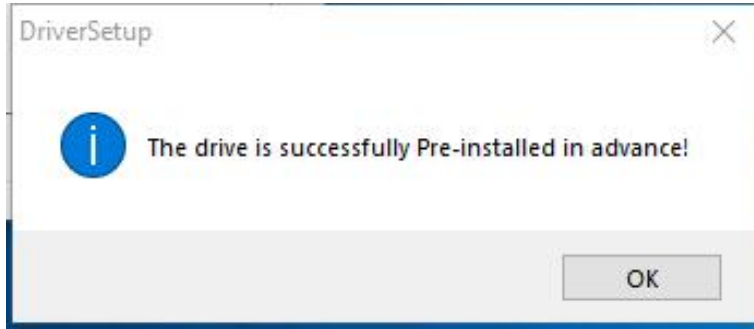
9. Click "Finish" after the App has been installed completely.



10. Install the driver, click "Install".



11. Click "OK" after the driver has been installed completely.



## How to use the App to update the firmware

1. Use a USB A to C cable or C to C cable.



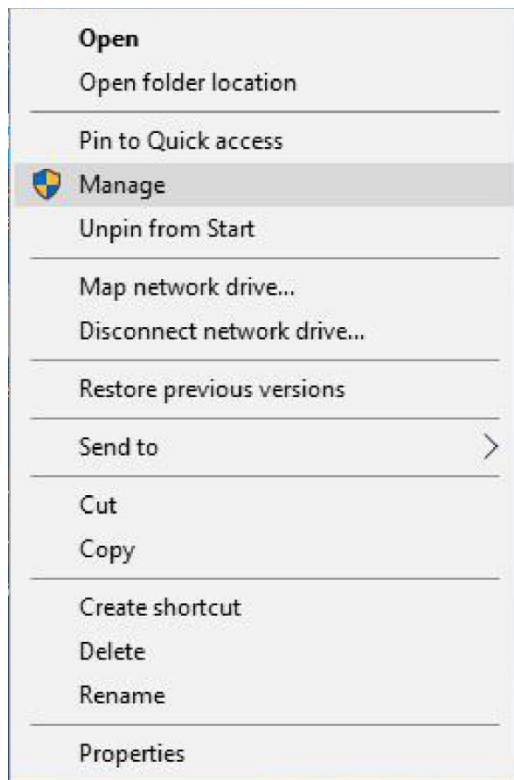
2. Connect the Core Drive to your computer via the USB cable.



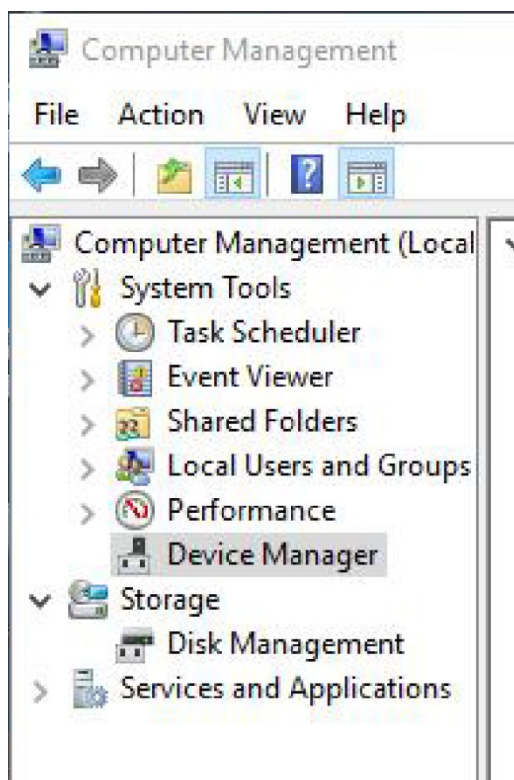
3. If the computer cannot identify the Core Drive, unplug the USB-C cable, flip it over, and plug it into the Core Drive again.



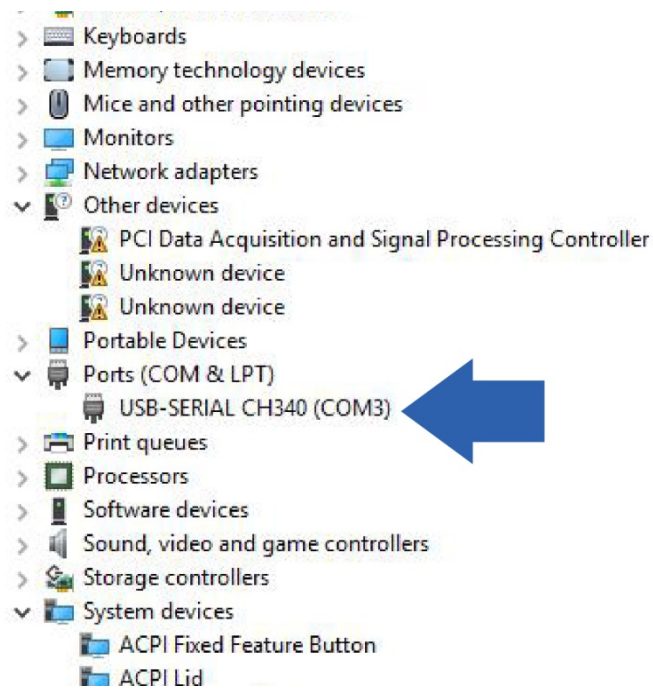
4. Check whether the Core Drive is connected to your computer. Right click “This Computer”, click “Manage”.



then click “Device Manager”.



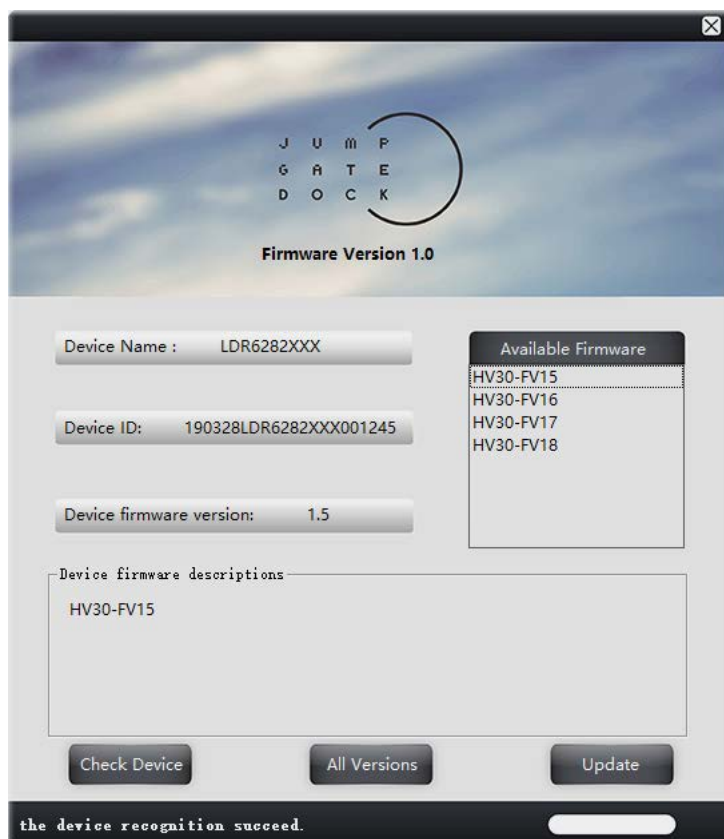
You will find “USB-SERIAL CH340” under “Ports (COM & LPT)”.



5. Click the “Jumpgate” icon on the Desktop.



6. Click “Check Device”. If the Core Drive is connecting to the computer, you will be able to see the Device info in a few seconds.





7. Choose the firmware version that you want to update (install into the Core Drive). Then click “Update” to start updating the firmware of Core Drive. (You can install any firmware version that available into your Core Drive at any time) **The App will automatically download the newest firmware when the computer is connected to the internet.**

**HV30-FV12:** Default Version.

**HV30-FV13:** Compatible with HUAWEI PD protocol.

**HV30-FV14:** Test version (Not recommended).

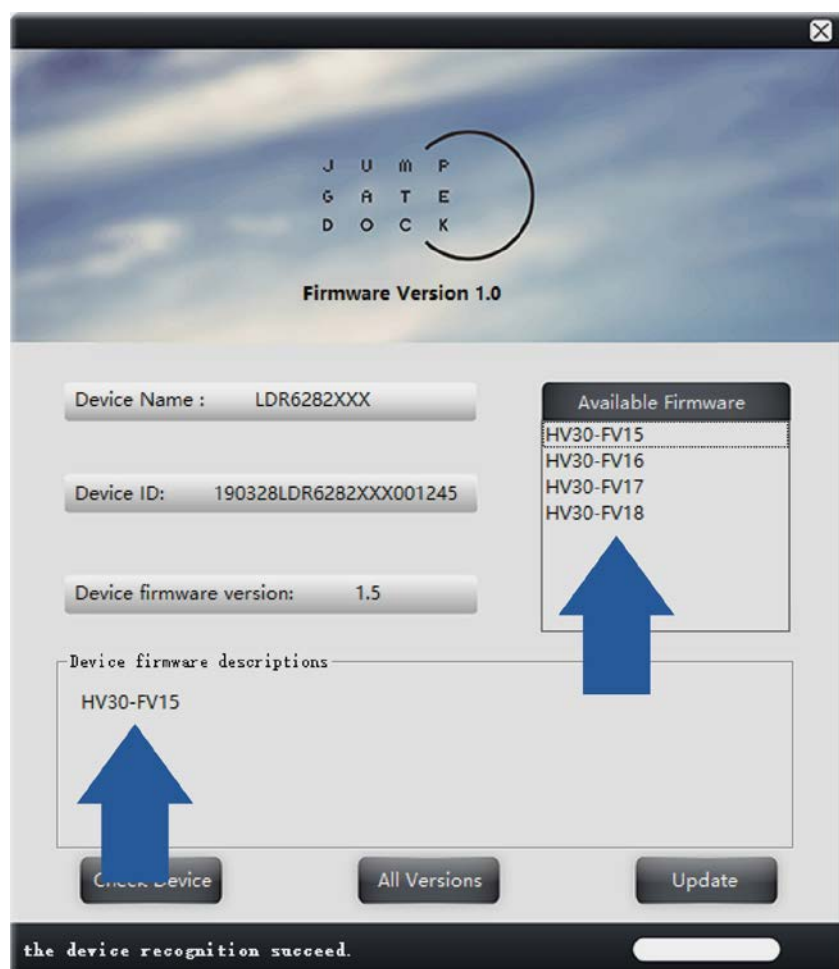
**HV30-FV15:** 8BitDo Version, no need to unplug the 8BitDo Bluetooth adapter every time you wake up your SWITCH.

**HV30-FV16:** For new hardware with FV-16 printed on the Core Drive.

**HV30-FV17:** Beta Version. Please do not install this firmware.

**HV30-FV18:** Enables Core Drive to output SWITCH TV Mode with a 9V charger. (Only for new hardware with FV-16 printed on the Core Drive)

NOTE: If the Core Drive is disconnected from the computer during the update process, please start the process again and complete it before attempting to use the Core Drive.

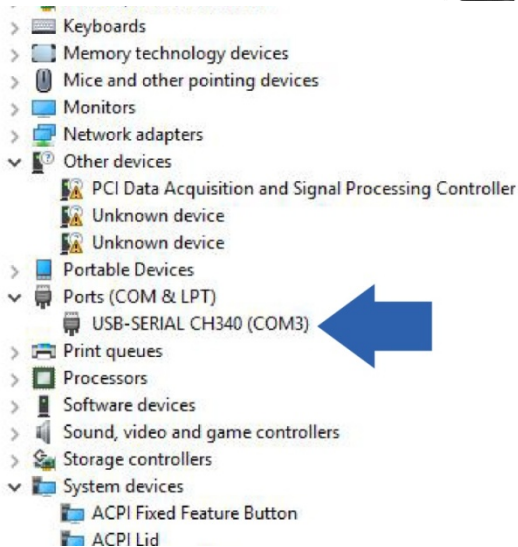


8. Close the window when the firmware updating finished.

# Troubleshooting

## My PC cannot find the Core Drive

If the computer cannot identify the Core Drive, please unplug the USB-C cable, flip it over, and plug it into the Core Drive again, or switch to another computer.



## The App cannot find my Core Drive (Error 8 & Error 9)

Please make sure your PC is connected to the internet during the update process. Click “Update” to download the newest firmware.



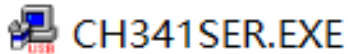


# Uninstall the App

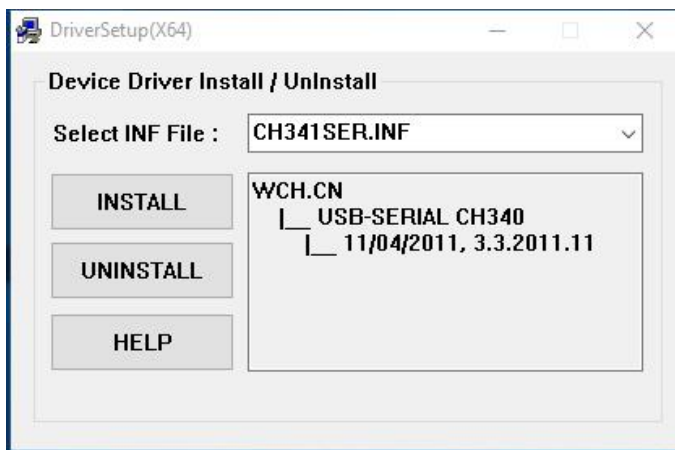
1. Right-click the icon and choose "Open file location".



2. Double click "CH341SER.EXE".



3. Choose "Uninstall".



4. Finally, delete the whole folder (CTools) after uninstalling the driver (CH341SER.EXE).

