

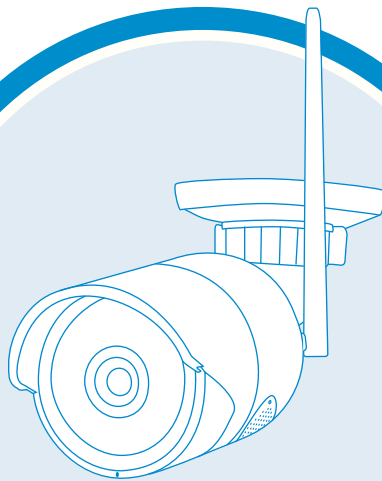


[www.techage.com](http://www.techage.com)  
[support@techage.com](mailto:support@techage.com)



# WiFi AI Camera

— User Manual —



Security Expert for Your Home and Business

[www.techage.com](http://www.techage.com)

## Table of Content

01. About the WiFi Smart Camera

02. View on Smart Phones

03. View on PC via IE

04. View on PC Software

05. View on Third Parts PC Software

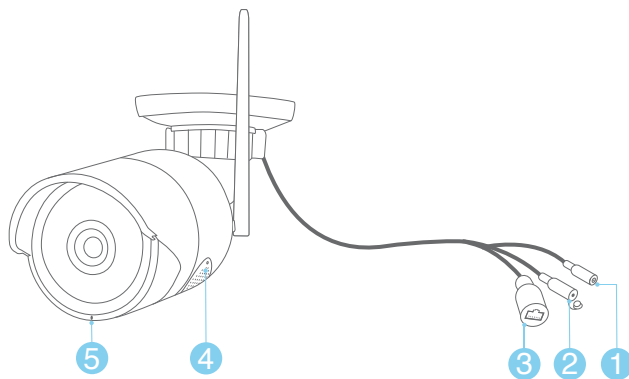


## Techage WiFi AI Camera

Thank you for purchasing Techage security WiFi AI Camera. Techage is committed to providing customers with high quality and reliable security products and solutions.

This quick user guide will help you learn fast and make it work easily. For detailed and latest user manual, you can download the PDF user manual on our website : [www.techage.com](http://www.techage.com)

### 01 About the WiFi AI Cam



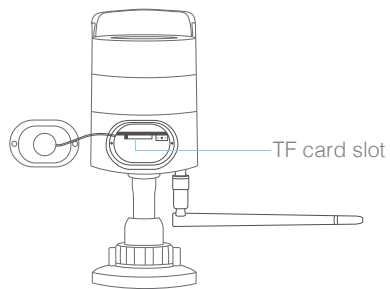
1. DC Power Port: Power Input 12V 1A.
2. Reset Button: Reset the camera to be factory defaults and into WiFi searching mode.
3. RJ45 Port: For Ethernet cable to the router
4. Speaker : For two way talk ,alert Voice play , alarm sound or broadcast
5. Microphone: For picking up audio (For different models, the position of the MIC may be different.)

This WiFi camera is an AI camera, with flood light on in the night after humanoid detect. Humanoid detect is a smarter way to detect human motion with AI tech. It is much more accurate than motion sensor and common motion detection and with no false alarm because of pets or swinging branches of trees.

This WiFi camera is with a speaker, which is for two way talk and alert voice play. When human detected or alarm, it will play alert voice message like : "Alert area, please leave" , "Hello, welcome ! " or alarm sound if this feature is turned on. (As factory defaults it is off.)

### Insert or take out the TF card

Take off the two screws on the speaker cover and you will find the TF card slot of the camera.



## 02 View on Smart Phones

### 1. Download and Install the iCsee App

Scan the QR code below to download the "iCsee" app or search "iCsee" in App Store or Google Play to download it. When you install it, please allow all the authorizations if you want full functions and alarm pushes anytime.

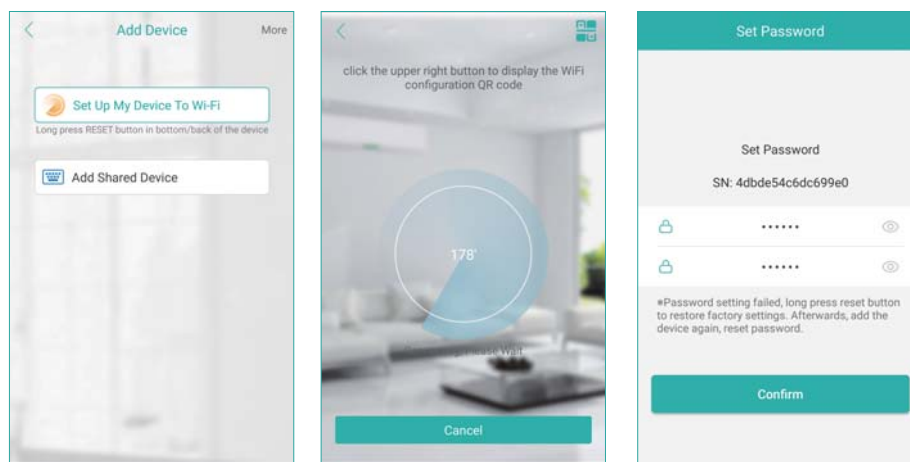


### 2. Add the AI Camera to WiFi

After installing the app on your smart phones, you can register an account in it and start adding your WiFi AI camera in it.

## 2.1 Smart WiFi Setup

Power on the camera with the power adapter. The white lights in the camera will be on for seconds, and the camera will be in WiFi and initialization mode and you can add your camera to WiFi. (You can also press the reset button to get the camera into the initialization mode and program the WiFi.)



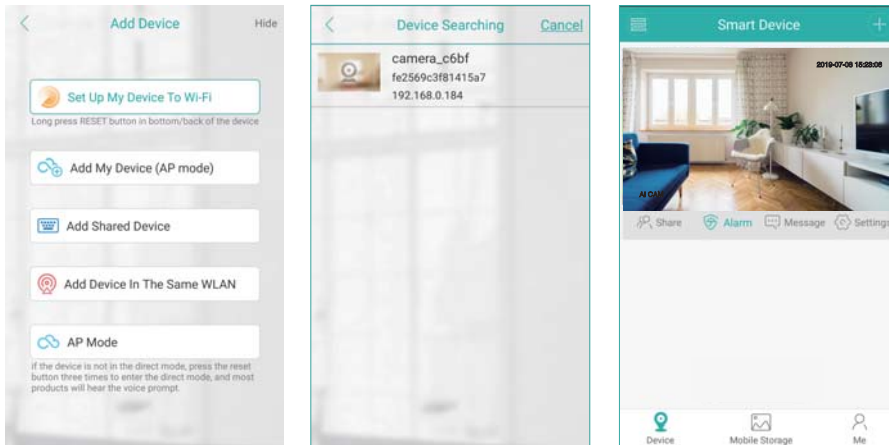
Before adding, please ensure your Smart phone connected to the WiFi of the same router as the WiFi Smart camera. And keep the camera and your smart phone nearby the router within 10 feet.

Click the "+" in the right above corner, then click "Setup My Device to WiFi", and then follow the steps, there will be voice prompt for each step. After you set the WiFi into the camera successfully you will hear a voice prompt and it will go to the "Set Password" page. After password setting, you can name the device and start enjoying the video surveillance.

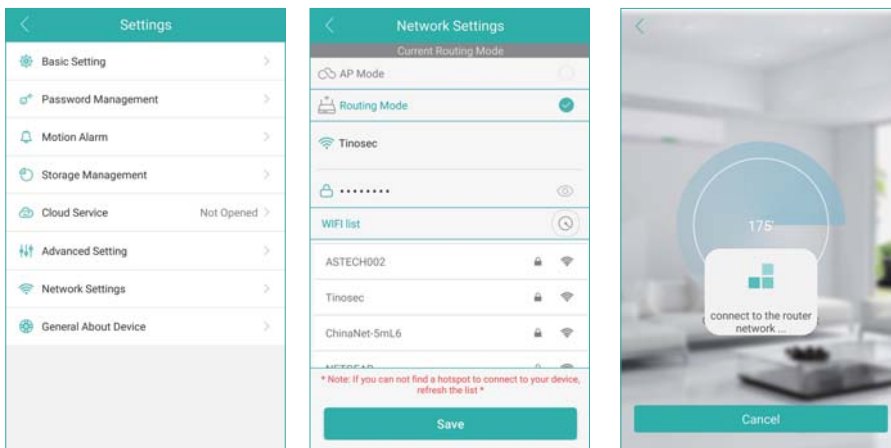
If you still can not connect the WiFi to the camera successfully, please try to use the wired Ethernet cable to connect it to WiFi as below.

## 2.2 Wired Ethernet Cable to Setup WiFi

Use the Ethernet cable with the camera to connect it to the router. Ensure your smart phone is connected to router's WiFi. Click the "+" in the right above corner, then click "More" and choose "Add device in the same WLAN", then there will be a list of the cameras in the same WLAN. Choose the camera you want to add. And then back to the video image page of the camera.




After you added the camera into the App. Then Click “Settings” >> “Network Setting”>> Choose the WiFi you want to add and then input the password of the WiFi , Click “Save” and then confirm to switch it to router mode. It will start the connecting. When it succeeds, it will be back to the video image page again. Plug the Ethernet cable from the camera and you will hear a prompt “Connected the router successfully!”

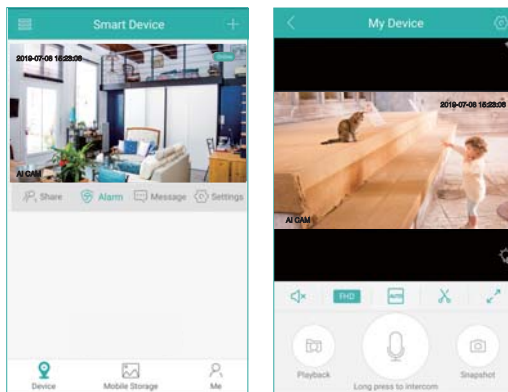


### 3. Using the App

After the camera is added into the app, follow steps below to do settings and control it.

### Control the camera

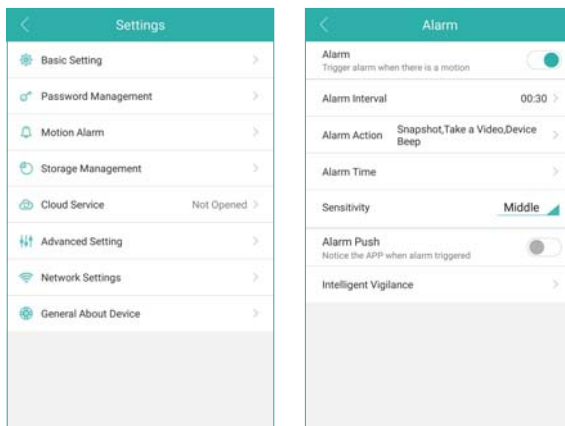
Click the video image of the camera and then you can do snapshot, two way intercom and playback the video recorded on the TF card. Click  to record video clips, it will count the seconds of the recorded video clips that you've recorded on your mobile phone.



You can find the picture snapshot and the video clips you made on your phone “Mobile Storage”

### Settings

In the settings, you can do basic setting, like name the device, language and so on. You can change the password, do alarm settings, open or close the alarm push, check storage and network settings.



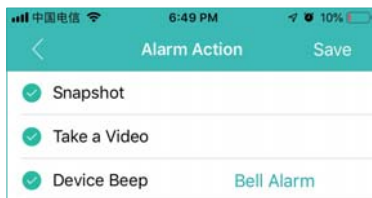


## 4. Unique features


### Alarm Voice Alert

In the motion alarm, check the alarm action. You can set what the camera does after alarms.

It can snapshot , take a video and at the same time it will beep or play voice prompt. You can click "Bell Alarm" to choose what prompt voice it will play after alarms. You can choose "Alert area, please leave" , "Hello, welcome ! " or " Howling Alarm" . As default this function is closed. Please do remember save it after changes made.



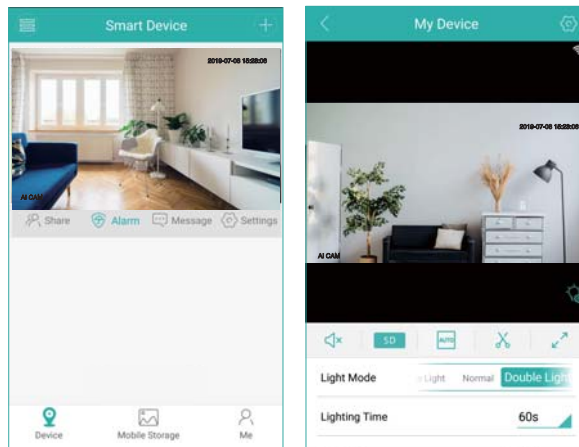
### Flood Light

On the live video, click the  icon. It will show the IR light settings for the camera. There are two types of lights in the camera, IR light and white light, and they have three modes.

White Light Mode: The white light will be on all the time in the night.

Normal: Only IR light will be on in the night. And the white light will be off day and night.

Double Light Mode: The IR light will be on in the night and the white light will be turned on in the night after human detection. (It is the default mode of the camera.)



### AI Smart Features

In the Motion Alarm, you can find the “Intelligent Vigilance”. There are smart AI functions, like “Humanoid Detection” “Show Traces” and “Perimeter Alert”.

#### ◆ Humanoid Detection

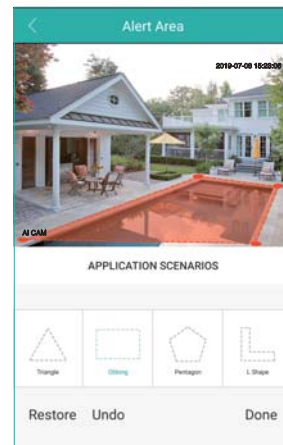
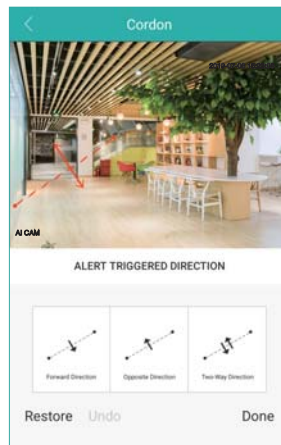
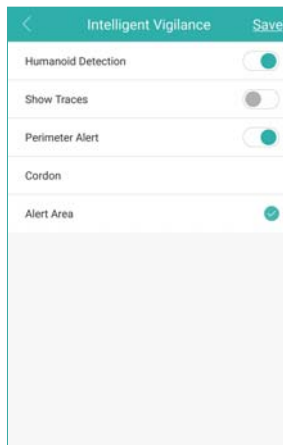
Humanoid Detection is a smarter way to detect human motion with AI tech. It is much more accurate than motion sensor and common motion detection and with no false alarm because of pets or swinging branches of trees.

#### ◆ Show Traces

When this function is on, there will be a trace frame,when people are in the live video and it will follow the people when they are moving.

#### ◆ Perimeter Alert

There are two settings for the perimeter alert. One is cordon, the other is alert area. For the cordon, you can put a cordon in the video image and when people cross it, it will alarm. You can set different alert directions for the cordon. Another Setting for perimeter alert is alert area. You can draw different alert areas that you want to protect in the live video image.

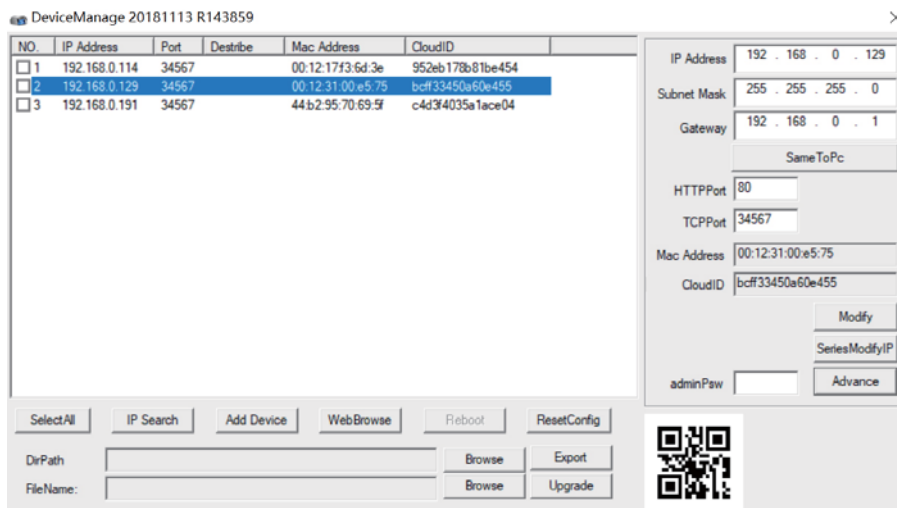


## 03 View on PC via IE

Download the DeviceManage software from <http://techage.com/download.php> and install it.

Please ensure your IP camera and your PC is in the same LAN, open the device manage software to search out your IP camera, click it and then click WebBrowse, it will open in the browser. And please allow the activeX control. If you can not install the activeX control, please search "How to install the activeX control?" on our website.

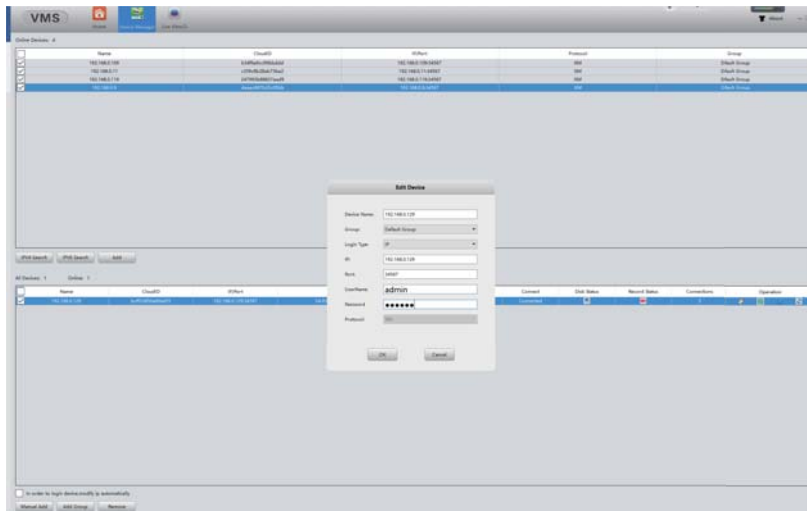
<http://www.techage.com/knowledge.php>



## 04 View on PC Software

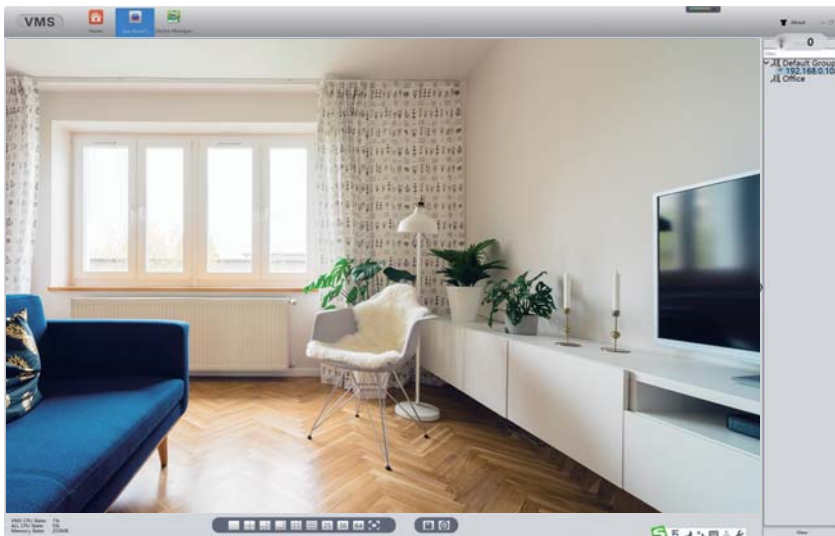
Step 1: Download VMS software from <http://techage.com/download.php>. After opening the VMS software, click on Login directly. Do not need to input password, as default none password, just leave it blank.

Step 2: Choose Device Manager>IP4 search, then find your NVR and choose it. Click "Add"



After that click the  to edit the device, and update the password if you've already changed the password of the device.

And then back to Home page and click "Live View", double click your device IP and you can view your device in the VMS.

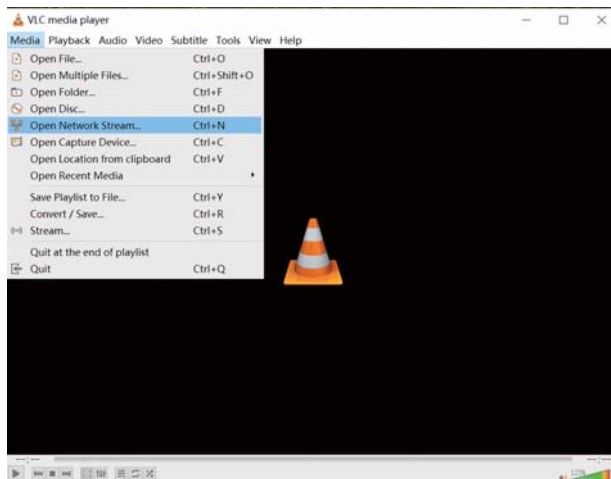


## 05 View on Third Part Video Software

This WiFi AI Camera is of ONVIF protocol and support RTSP monitoring. It is compatible with some popular third part video monitoring software, which mainly is using RTSP and works with Onvif protocol. Here below are some of the popular ones.

### 1.View on VLC

Open your VLC media player. Click "Media">"Open Network Stream" Then enter the RTSP network URL of the camera in the WLAN.



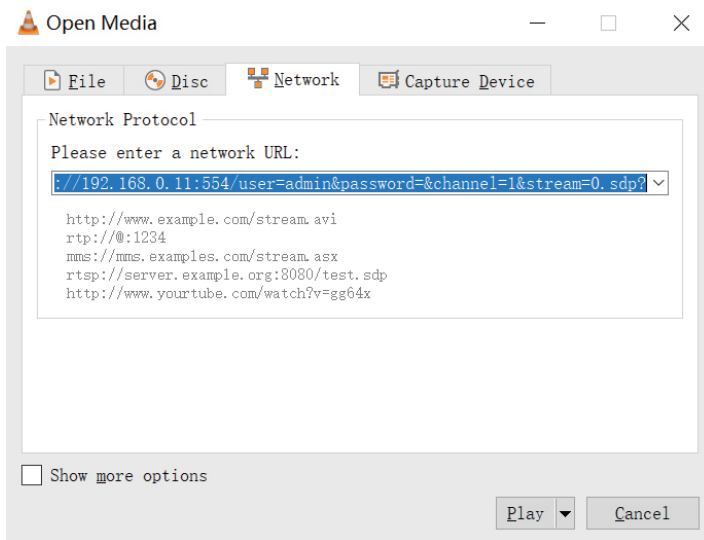
RTSP Data as below:

```
rtsp://192.168.0.109:554/user=admin&password=&channel=1&stream=0.sdp?
```

"192.168.0.109": This is the IP of the camera, you can find and modify it in the "DeviceManagement" software.(Download it in our website : <http://techage.com/download.php>)

"user=admin" : This is the user name for your camera, as default it is "admin"

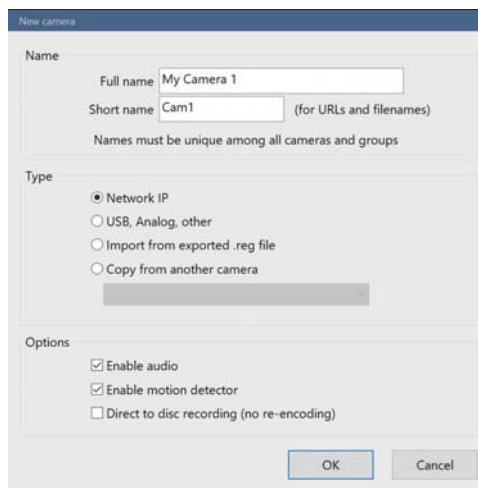
"password=": This is the password for your camera, as default it is none. If you changed it, please update it.



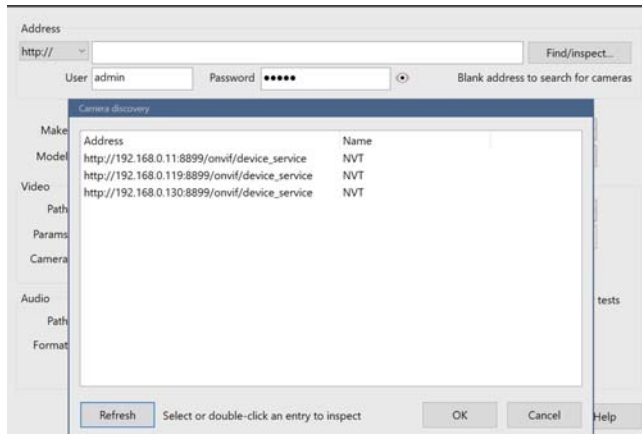
## 2. View on Blue Iris

2.1 Open your Blue Iris 5 software, Click menu >> "Add new camera"

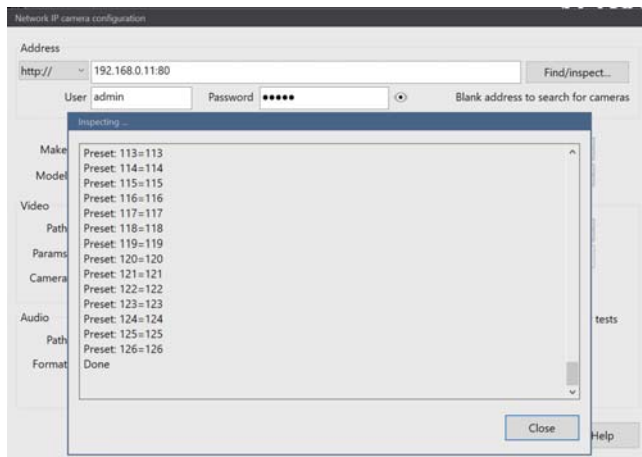
Then you follow picture below and "Enable audio" if your camera is with audio



2.2 Click “Find/inspect” and choose the IP or the IP Camera you want to add . Click”OK”.



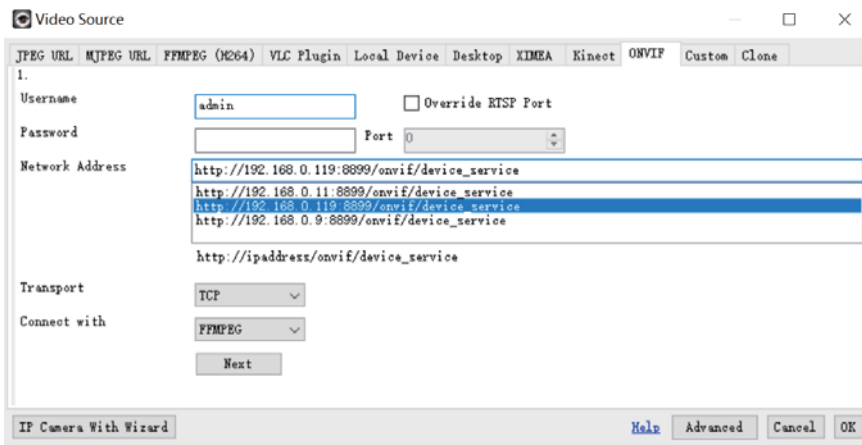
2.3 Click “Close ”, then Click “OK” to add the camera.



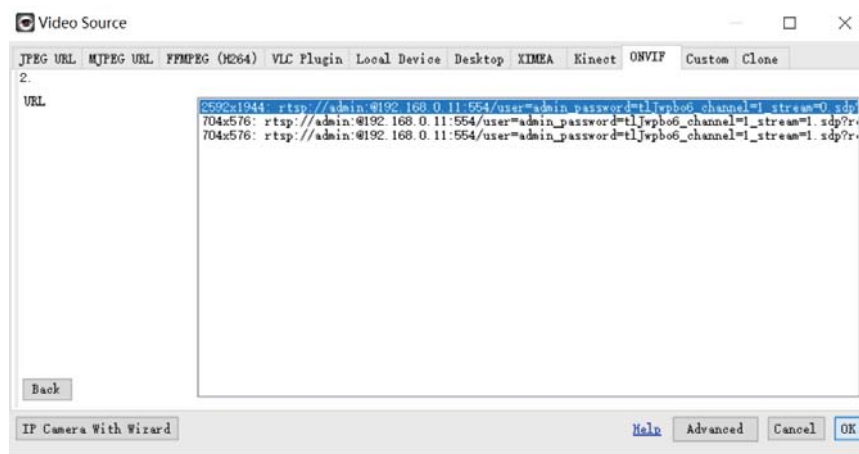
### 3. View on iSpy

3.1 Open your iSpy software, click “Add” and choose the “ONVIF Camera”

Input your camera “Username” and “Password”, select the IP address of your camera, click “Next”

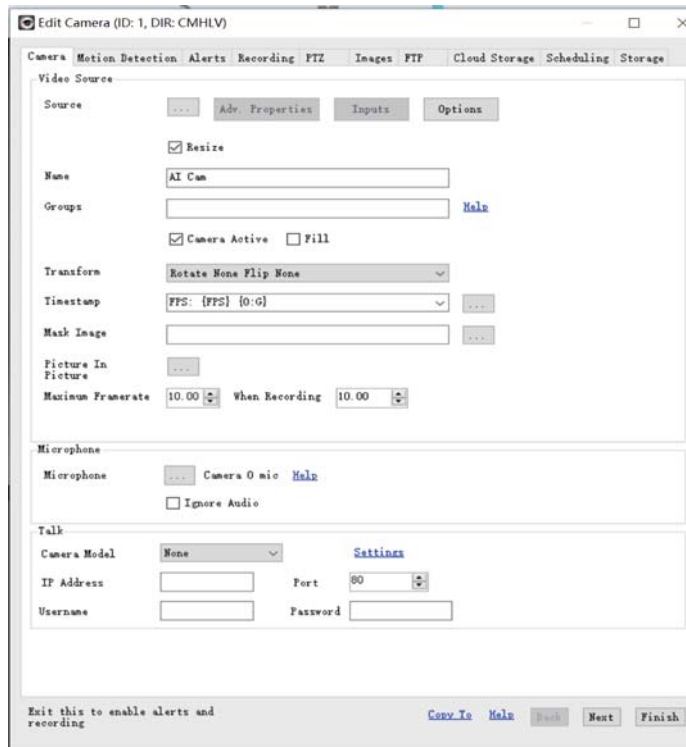


3.2 Then Choose your camera RTSP(Main Stream), then Click “OK”



3.3 Then you go to Camera option and you can name the IP Camera, input your camera IP address, User name and Password, click “Finish” to finish the add. If you have an audio camera, please click the “listen” icon to start listening.





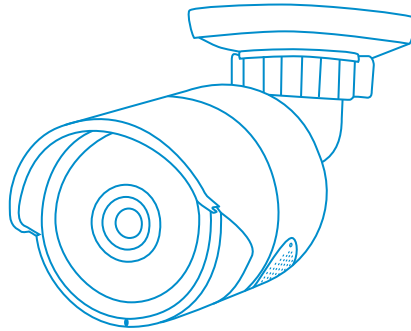
This WiFi AI Camera has some features and settings which not listed in the manual. You can reach our website to learn more about it.





All rights reserved. No part of this publication may be reproduced by any means without written permission from Techage. The information in this publication is believed to be accurate in all respects.

Techage cannot assume responsibility for any consequences resulting from the use thereof. The information contained herein is subject to change without notice. Revisions or new editions to this publication may be issued to incorporate such changes.



[www.techage.com](http://www.techage.com)  
[support@techage.com](mailto:support@techage.com)

