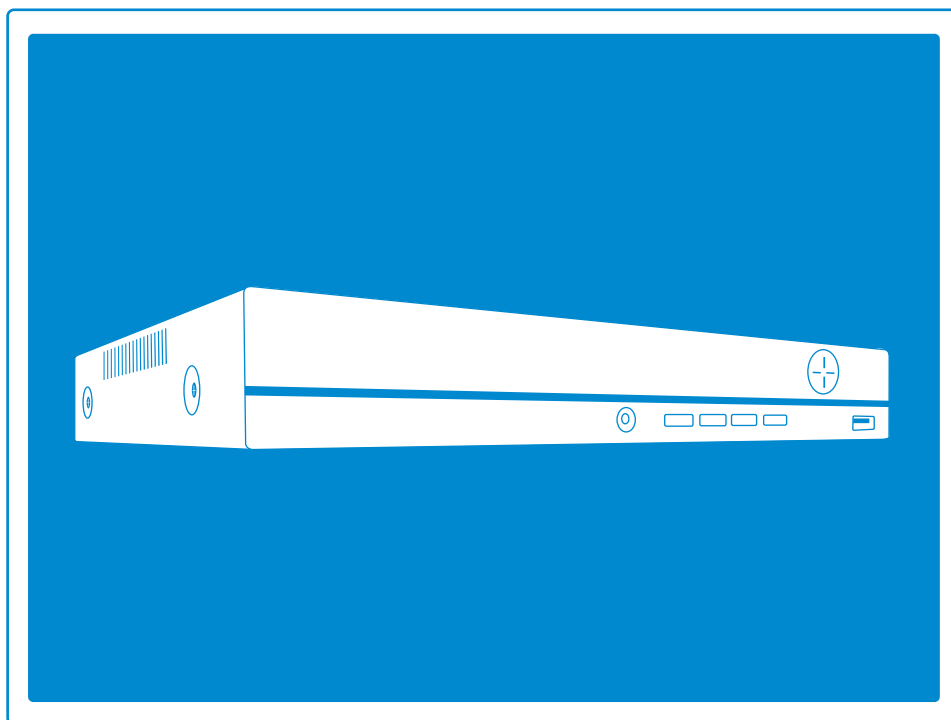


PoE NVR

Quick User Guide





XMEye App

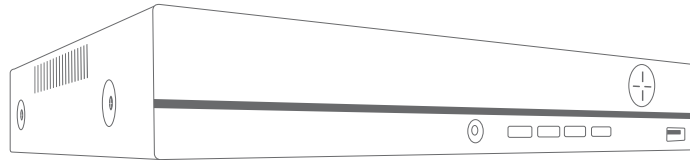
Table of Contents

1. NVR installation	04
1.1 Hard Disk Installation	04
1.2 Boot & Preview	04
2. Function Setting	05
2.1 Login System	05
2.2 HDD Setup	05
2.3 General	06
2.4 Record Setup	06
2.5 Video Playback	07
2.6 Video Backup	08
2.7 Human Detection	09
2.8 Network Setup	10
2.9 Check Nat Status	10
2.10 Email Setup	11
2.11 User Management	12
2.12 Audio Setting	13
3. Remote View	13
3.1 Remote View Via PC	13
3.2 Remote View Via PC Client Software	14
3.3 Remote View Via Smart Phone	14
4. Digital Channels Setup	16
5. Add IP Camera	17

Preface

Thanks for purchasing the PoE Network Video Recorder Surveillance products. This user manual is for 4CH 8CH and 16CH PoE NVR and cameras system. There will be firmware and software update for the cameras and NVRs. For the latest user manual, please write to us and visit the store where you bought to get it.

NVR Overview



Front of the PoE NVR

PWR: It will be on when the NVR is plugged on with power adapter (DC 48V~52V).

USB Port: For connecting USB mouse or USB disk to backup video.

IR: To receive infrared remote control signal.

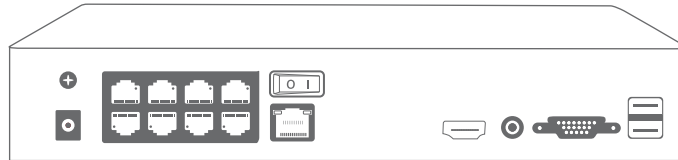
Quad: Switch the video display 1/4/8/16 CH on the monitor.

Menu: Directly go to main menu.

Directions: Choose different options on NVR, left and right, up and down.

ESC/Back: Escape from the current options/windows, cancel or back to above options.

Enter: Enter the options.



Back of the NVR

DC IN: For power supply DC 48~52V

PoE 1~8: Ethernet ports for the PoE Cameras.

UP Link: Ethernet port for connecting to the router.

Switch button: turn on/off NVR.

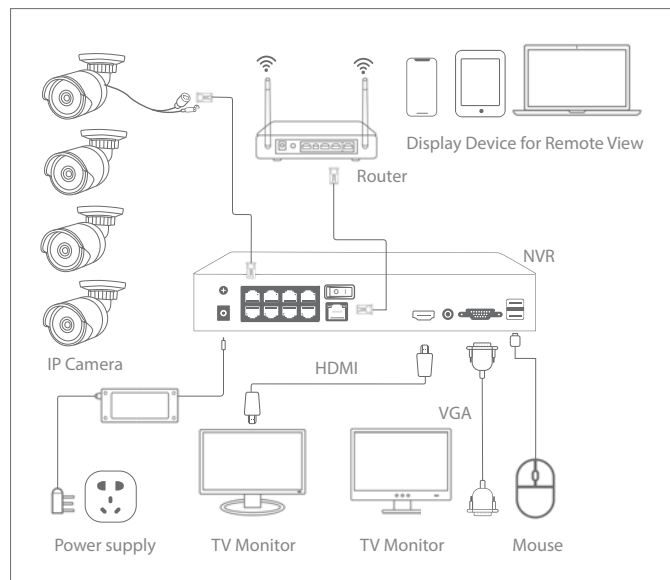
HDMI: For connecting the monitor or display with HDMI cable.

AUDIO OUT: For connecting speakers to play the audio recorded.

VGA: For connecting the monitor or display with VGA cable.

USB: For USB mouse or USB disk to backup video

Wiring and Connection Diagram



After the wiring and connection as above, the live images should show up on the monitor or display. Then you can install the cameras and do the wiring.

Cameras Installations

When you install the cameras, please take care to avoid the inaccurate ways of installations.

Wrong Viewing Angles

Wrong Way: The camera lens is installed too close to the wall. In the night the wall will reflect the light from the IR lights to the lens.

Right Way: Adjust the directions of the cameras lens, make sure the lens of the camera is away from the wall.

Close Object Reflects

Wrong Way: There are objects too close to the lens. The object will reflect light from the IR light to the lens.

Right Way: Move the objects away from the Lens or change the camera's installation position.

Close Wire Cable Reflects

Wrong Way: The wire cables of the camera, like power cable or ethernet cable is too close to the camera lens. It will reflect light from IR light to the lens.

Right Way: Move the power cable or Ethernet cable away from the camera lens and fix it on the back of the camera.

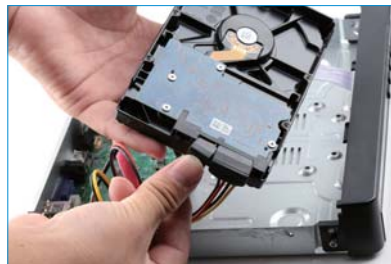
01./ NVR Installation

1.1 Hard Disk Installation

Please install the Hard Disk first. If not, the Video Recorder can only monitor normally, but it can not record or playback.



① Remove the case



② Plug in SATA cable



③ Screw HDD to the bottom



④ Install the case back

Notice: Please try to choose a special monitoring hard drive disk in order to record for a longer time. The video recorder supports 3.5" or 2.5" SATA Hard Drive

Warning: please make sure the power is off before installation.

1.2 Boot & Preview

Make sure the power supply matches the requirements of the hard disk video recorder. After connecting the power, the indicator on the front of

the NVR will light on and you will hear a buzzer sound, then the display will boot up and the device will access to the preview image. After the recovery of the non-normal power failure, the device will be automatically restored to the state before the power is off.

02./ Function Setting

2.1 Login System

After the normal boot, you have to log in first and the system will provide the corresponding function according to the user's rights.

Right click the mouse → **【Main Menu】**

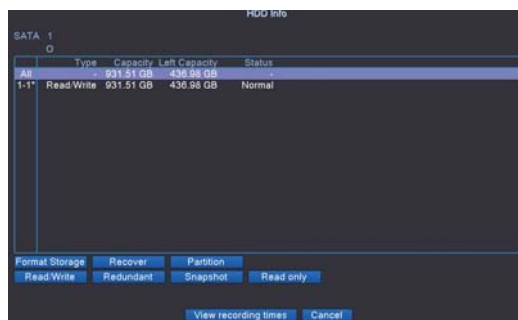


Default username: admin

Password:(leave it blank, null password)

2.2 HDD Setup

Right click the mouse → **【Main Menu】** → **【Advanced】** → **【HDD info】**

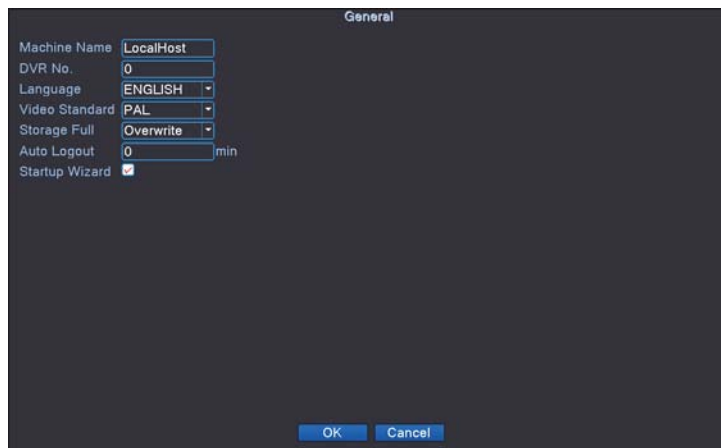


Choose the Hard Disk, click Format Storage, start to format the HDD.

Notice: Please confirm the Hard Disk is connected. The hard disk should be formatted before first use, so that it can record. It will be automatically overwritten when the Hard Disk storage is full if you set overwrite.

2.3 General

Right click the mouse → **【Main Menu】** → **【System】** → **【General】**



[Storage Full]

Choose Overwrite: continue recording video and cycle covering the former video while the storage of HDD is full.

Choose Stop: Stop recording video while the storage of HDD is full.

[Auto Logout] You can set up a 0-60 min auto standby, 0 min means you don't set up the standby time.

[Startup Wizard] Tick it to get startup wizard when reboot the system. (untick it as default)

2.4 Record Setup

Right click the mouse → **【Main Menu】** → **【Record Conf.】**



[Length] Set up the time length for per Video file, Default time is 60 minutes.

[Period] Set up the record period, it will start-up recording within the period.

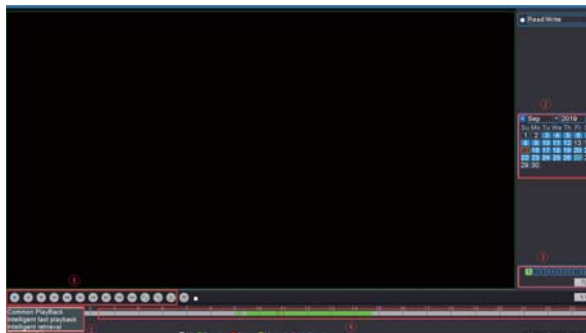
[Regular] Within the setup period, regular recording video.

[Detect] Within the setup period, trigger "motion" signal, the device start to record motion.













Notice: Default setting is a 24-hour recording continuously for all channels.

2.5 Video Playback

Right click the mouse → **【Main Menu】** → **【PlayBack】**

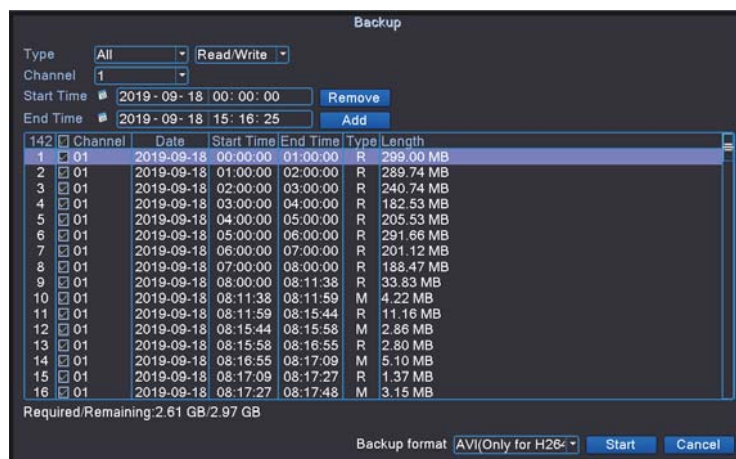


- ① Choose Play Mode
- ② Choose Video Date
- ③ Playback Channel Option
- ④ Video Playback Time
- ⑤ Playback Control Key

	Start Playback		Play Backward
	Stop Playing		Slow Playback
 	Rewind/Fast-forward	 	Prev/Next Frame
 	Prev/ Next File		Repeat Playback
	Full Screen		Start Editing

2.6 Video Backup

Right click the mouse → **【Main Menu】** → **【System】** → **【Backup】**



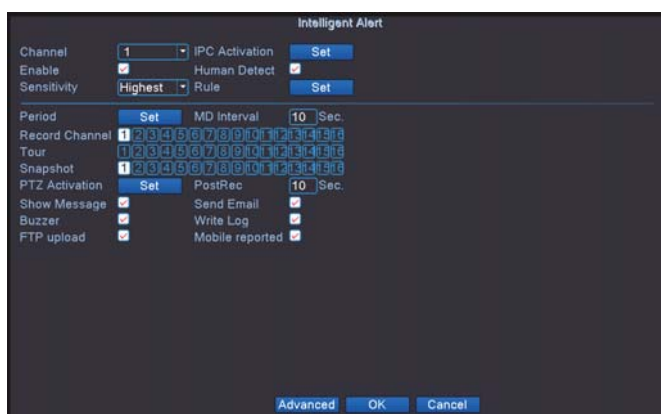
Choose Video Type→Choose Channel→Choose time→Click Add button, search Video file, Choose the file in the list, Click Start button to backup, it will automatically prompt after backup completed.

Notice: USB disk must be FAT32 format.

Please choose AVI format while backup, so that the backup video could play on PC directly.

2.7 Human Detection

Right click the mouse → **【Main Menu】** → **【Alarm】** → **【Intelligent Alert】**



[Channel] Select demand Channel.

[IPC Activation] Set Alarm Sound and voice Prompts.

[Human Detect] When it detects people, it starts to record motion.

[Rule] Set detect area rule.

[Period] During the setting period, the device will trigger the alarm signal of human detection.

[Record Channel] Current channel you are setting is the Default Record Channel, when current channel detects motion, other channel will record motion if you choose other channels.

[MD Interval] During the interval time, there will trigger one alarm signal though it has motion detection for several times.

[Show Message] Tick it to show Alarm Status when detect motion.

[Buzzer] Tick it to beep when detect motion.

[FTP upload] Tick it to send message to FTP when detect motion.

[Send Email] Tick it to send Email when detect motion.

[Write Log] Tick it to write log when detect motion.

[Mobile reported] Tick it to send notifications to mobile via APP when detect motion.

2.8 Network Setup

Connect NVR to Router → Right click the mouse → **【Main Menu】** → **【Network】**

Field	Value
Net Card	Wired NIC <input type="checkbox"/> DHCP Enable
IP Address	192.168.0.129
Subnet Mask	255.255.255.0
Gateway	192.168.0.1
Primary DNS	192.168.0.1
Secondary DNS	192.168.0.1
Media Port	34567
HTTP Port	8089
HS Download	<input type="checkbox"/>
Transfer Policy	Quality Prefe
Network encryption	No limited
NetService	NetService
POE transmission distance	POE transmission distance

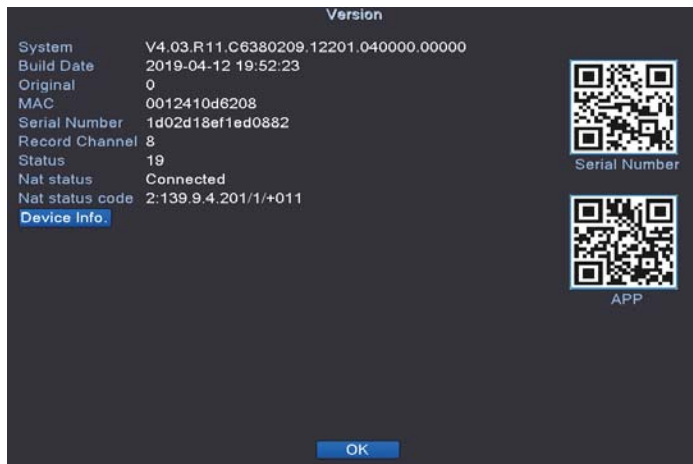
[DHCP Enable] Tick it to automatically obtain the IP address assigned by the server.

[IP address] Must be a unique IP address on the same LAN segment to avoid conflicts with other equipment in local area.

[HTTP Port] a port number for remote visit, default value is 80.

2.9 Check Nat Status

Right click the mouse → **【Main Menu】** → **【Advanced】** → **【Version】**



[Series Number] Device Serial Number for remote view.

[Nat Status] Check the network status, begin a remote monitoring when shows connected.

2.10 Email Setup

Right click the mouse → **【Main Menu】** → **【Network】** → **【NetService】** → **【Email】**

The screenshot shows an 'EMAIL' configuration menu with the following fields and options:

- Enable:
- SMTP Server:
- Port:
- Encryption:
- User Name:
- Password:
- Sender:
- Receiver:
- Title:

At the bottom, there are three buttons: 'Mail Testing', 'OK', and 'Cancel'.

[SMTP Server] Sender's mailbox (for example: gmail email).

[Port] Sender's mailbox SMTP port.

[Encryption] SSL

[User Name] Username of the sender's mailbox (must support and open SMTP function).

[Password] Password of the sender's mailbox.

[Receiver] Receiver's mailbox.

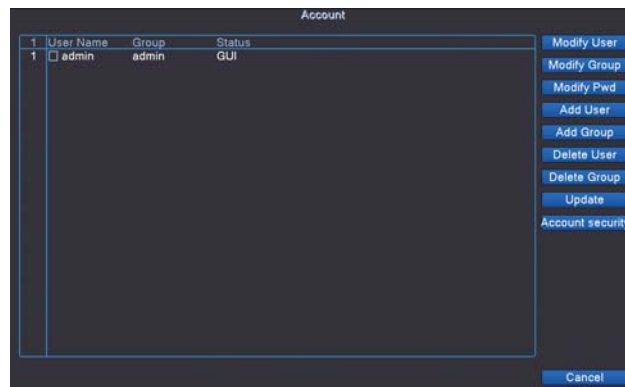
Click [Mail Testing] Send an email to receiver to test the Email setting.

Notice: Before testing the Email, please confirm the Network has been connected successfully.

If it failed, then change Encryption to TLS or NONE.

2.11 User Management

Right click screen → **【Main Menu】** → **【System】** → **【Account】**



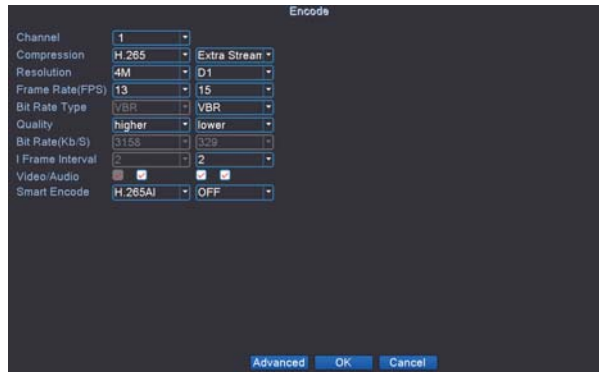
[Modify Password] Enter to Modify Password page, and modify password.

[Add User] Add User account and setup the User's permissions. Enter into the Add User page, input the User Name and Password.

Notice: Password can be setup as number+letter combination, please record your password in other ways and keep it in a safe place to avoid forgetting.

2.12 Audio Setting

Right click the mouse → **【Main Menu】** → **【System】** → **【Encode】**

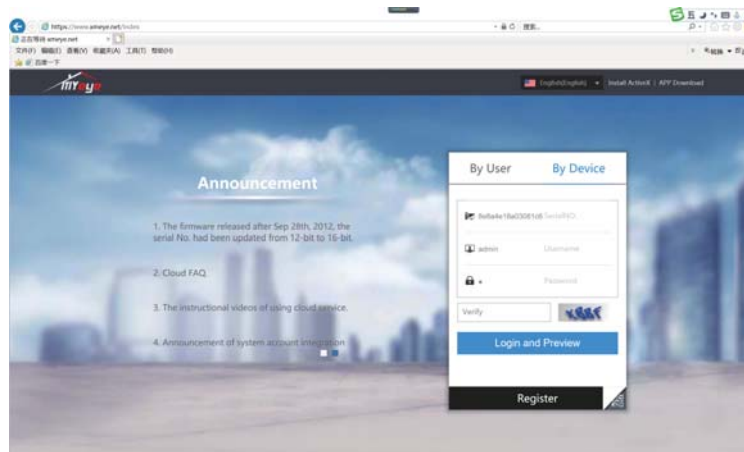


[Video/Audio] Four show the video file for streaming video and audio

03./ Remote View

3.1 Remote View Via PC

Open the IE Browser, enter <https://www.xmeye.net>, arrive at browsing page of remote view, choose “By Device”. Then enter Serial No., User-name, Password and Verify to realize remote view.



Serial No: Enter device Serial Number

Username: admin (Default)

Password: Just leave it blank (as default null)

3.2 Remote View Via PC Client Software

Please reach us to get the latest management software for the PC.

Open CMS PC client software after installation.



Click the menu [System]→[Device Manager] to add the Device. First, add area, then add device. Search the device's IP of device of LAN or choose Cloud Login Type and input Serial ID. After that you can get remote view.

3.3 Remote View Via Smart Phone

① Install the software: scan the QR code or search XMEye in APP store to download.

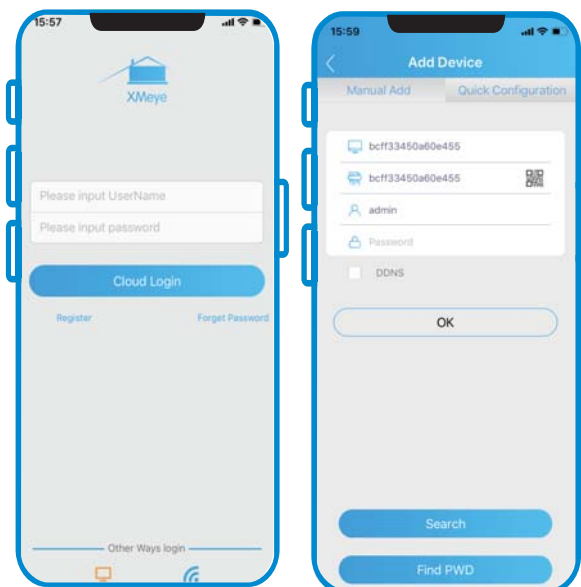
When turn on NVR for the first time→【Camera Test】→【Time Setup Wizard】→【Network】→【Install Mobile APP】



②Install successfully, register user, add device and begin a remote view.
Scan SN QR code

Username: admin (default)

Password: just leave it blank (default)



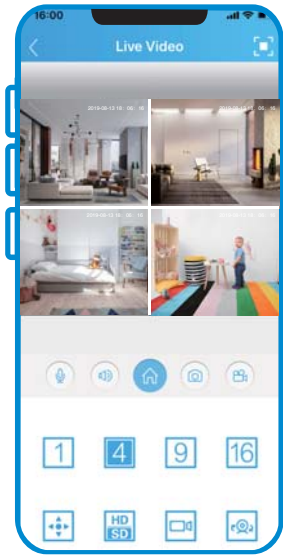
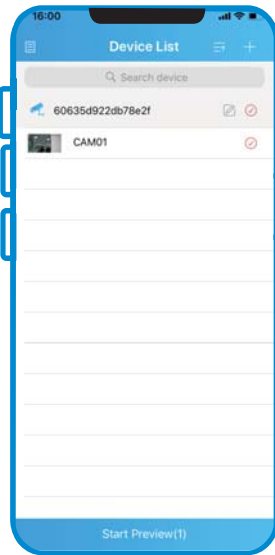
Step 1:

Tap register and input your

Username, password to create a new account

Step 2:

Click “+” to add devices: input Serial No., username and password



Step 3:

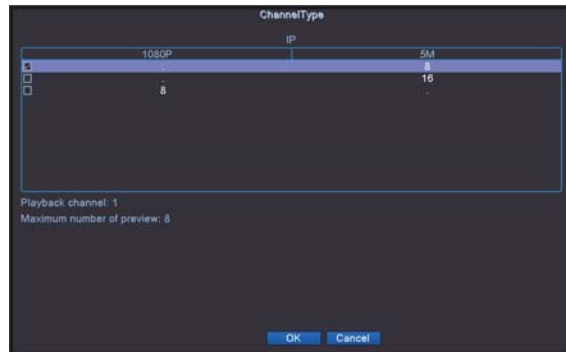
After device added,
click it to link the
server

Step 4:

Connect successful-
ly and start to view
video

04./ Digital Channels Setup

Right click the mouse → **【Main Menu】** → **【System】** → **【Digital】** →
【ChannelType】



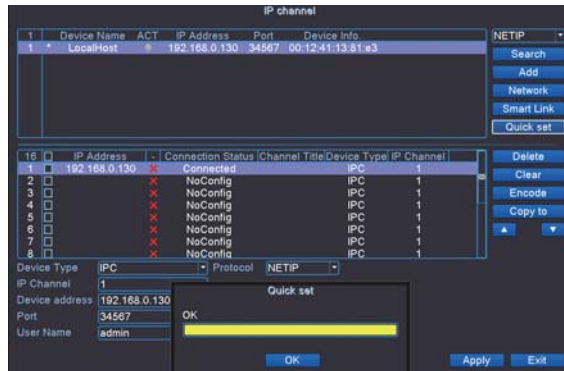
[Playback channel] number of channels that can playback simultaneously.

[Maximum number of preview] number of cameras can be viewed simultaneously.

Tick in the small to switch and restart.

05./ Add IP Camera

Right click the mouse → **【Channel Set】** → **【IP channel】** → **【Quick Set】**



Notice: Please confirm the User Name and Password of IPC is right or the video will not come out.

Important statements

The appearance of product is subject to actual product, the manual for reference only.

User manual and the software would be updated real-time, no special inform if updated.

The manual may contain technical inaccuracies, inconsistency of the product functions and operations, or some printing errors, all these will be subject to our final explanations.

Safety Caution

Do not put any bottle or cups with water on the device in case of spilling out.

Do not put the device under the condition of high-temperature, heavy-dust, direct-sunlight or close to heat-source.

Make sure the working temperature is between (-10°C~+50°C)

Do not disconnect the device when it is energized

All rights reserved. No part of this publication may be reproduced by any means without written permission from us. The information in this publication is believed to be accurate in all respects.

We cannot assume responsibility for any consequences resulting from the use thereof. The information contained herein is subject to change without notice. Revisions or new editions to this publication may be issued to incorporate such changes.

